

2023 COMPANY OVERVIEW



CONTENTS

About us

Business Area

Organization

2022 Business Highlights

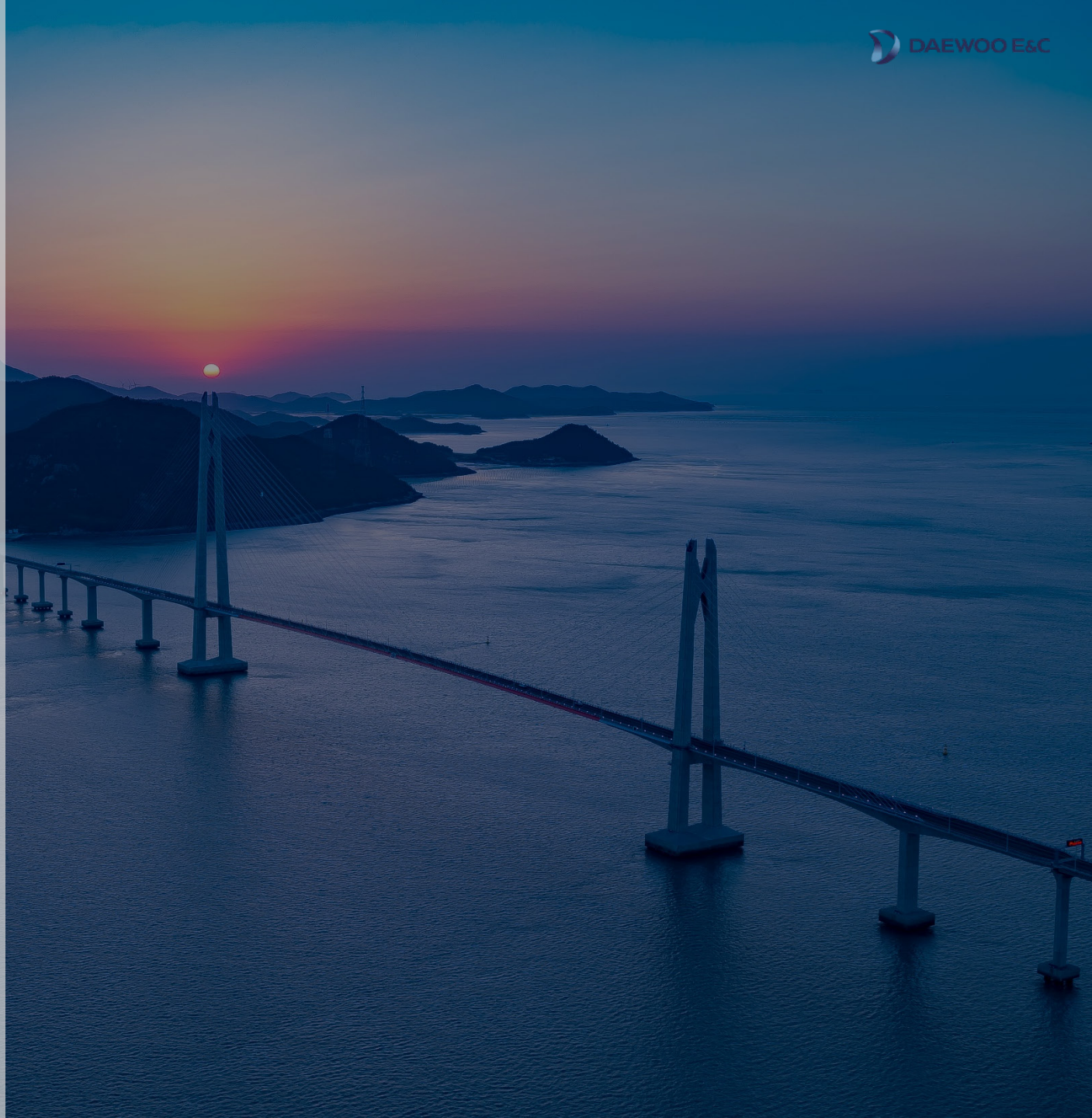
Global Network

Ongoing Overseas Projects

Sustainability Management

HSE-Q Management

Major Experiences



About Us

Company Name

Daewoo Engineering & Construction Co., Ltd.

Foundation

November 1, 1973

Head Office

170, Eulji-ro, Jung-gu, Seoul, 04548,

Republic of Korea

Branches & Subsidiaries

2 Branches & 16 Subsidiaries in Domestic

17 Regional Branches & 11 Subsidiaries in Overseas

Major Shareholders

Jungheung Group (50.75%)

National Pension Service (5.94%)

Vision

Your Dream, Our Space

Bringing customers' dream into real life

Your Dream

- Future lifestyle dreamed by customers
- Sustainable company desired by management and employees
- Company fulfilling its roles and responsibilities for community
- Future embracing a variety of imaginary scenarios

Our Space

- Space enhancing the customer value
- Happy workplace growing together with management and employees
- Environment where nature and technologies coexist for prosperity of mankind
- New world making imaginations come true

Business Area

OIL & GAS / POWER

[Oil & Gas]

- LNG Liquefaction
- LNG Storage Tank & Regasification
- Upstream
- Refinery & Petrochemical
- Pipeline & Other Tank

[Power]

- Combined Cycle Power
- Coal Fired Power
- Nuclear Power
- Hydro Power



CIVIL

[Civil]

- Road & Bridge
- Tunnel
- Shipyard & Harbor
- Railroad & Metro
- Airport
- Site Development
- Water Supply & Drainage
- Dam



HOUSING & BUILDING

[Housing]

- Apartments
- Residential
- Urban Living Housing

[Building]

- Commercial
- Hotel
- Hospital
- Education Facility
- Public Facility
- Sports Complex
- Data Center & R&D Center



INVESTMENT & DEVELOPMENT

[Development]

- PPP (Equity+EPC)
- IPP (Equity+EPC+O&M)
- Real Estate

[New Biz. Expansion]

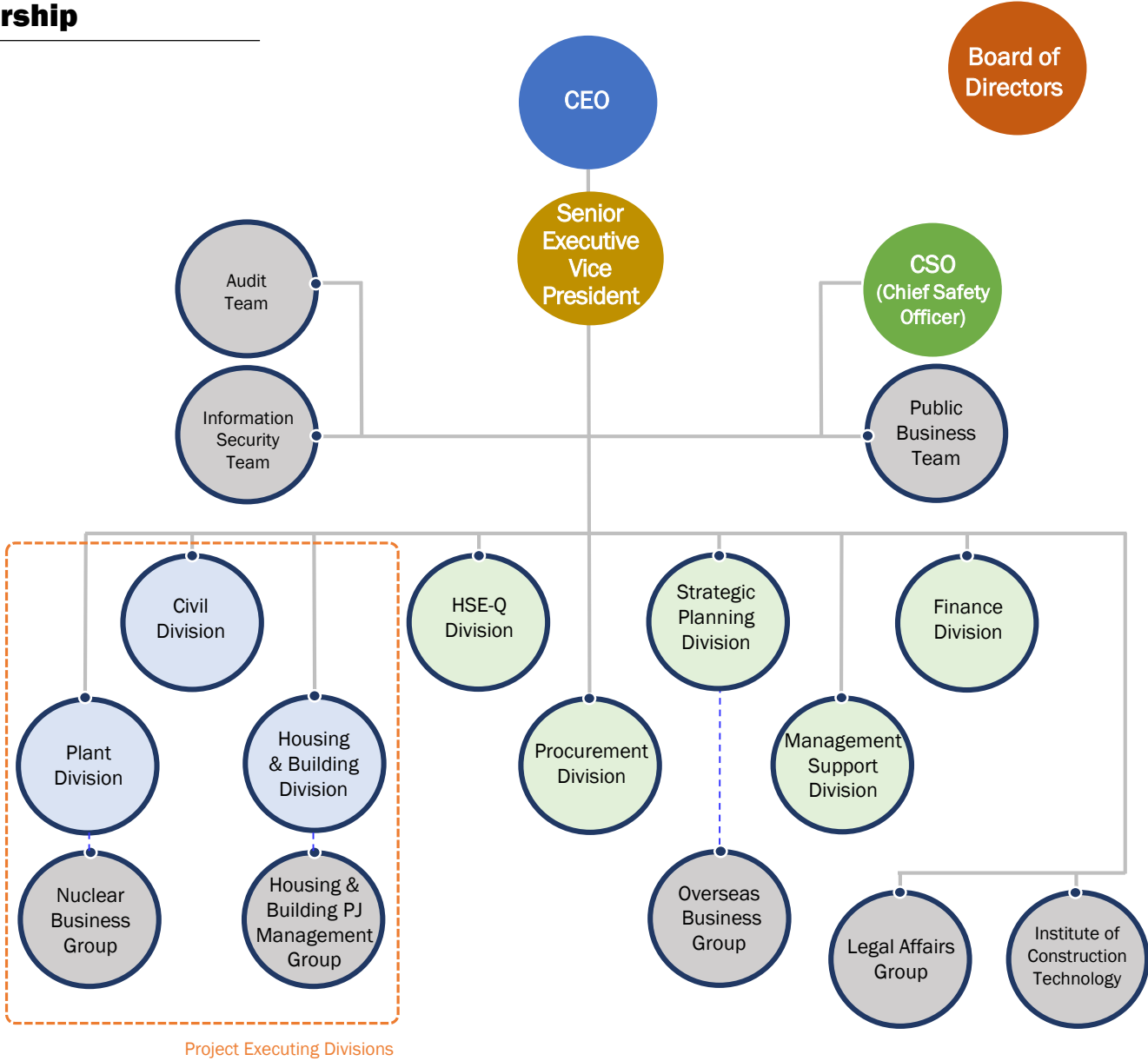
- Newtown Development
- Asset Management
- Investment on Start-up



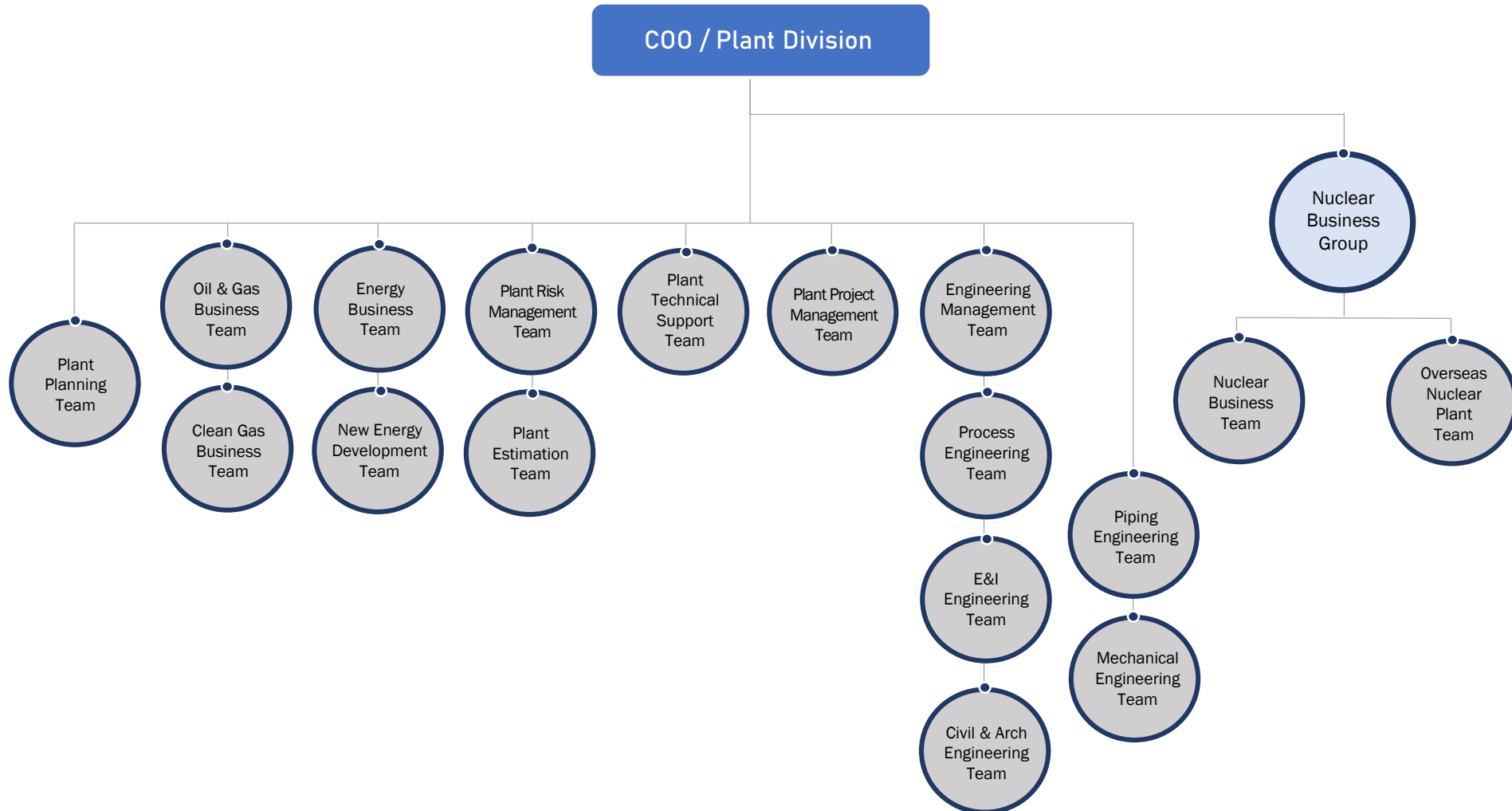
ORGANIZATION - Leadership

As of January 2023

- 5,842** Total Employees
- 4,022** Engineers
- 97** Teams
- 233** Project Sites
- 1** R&D Center



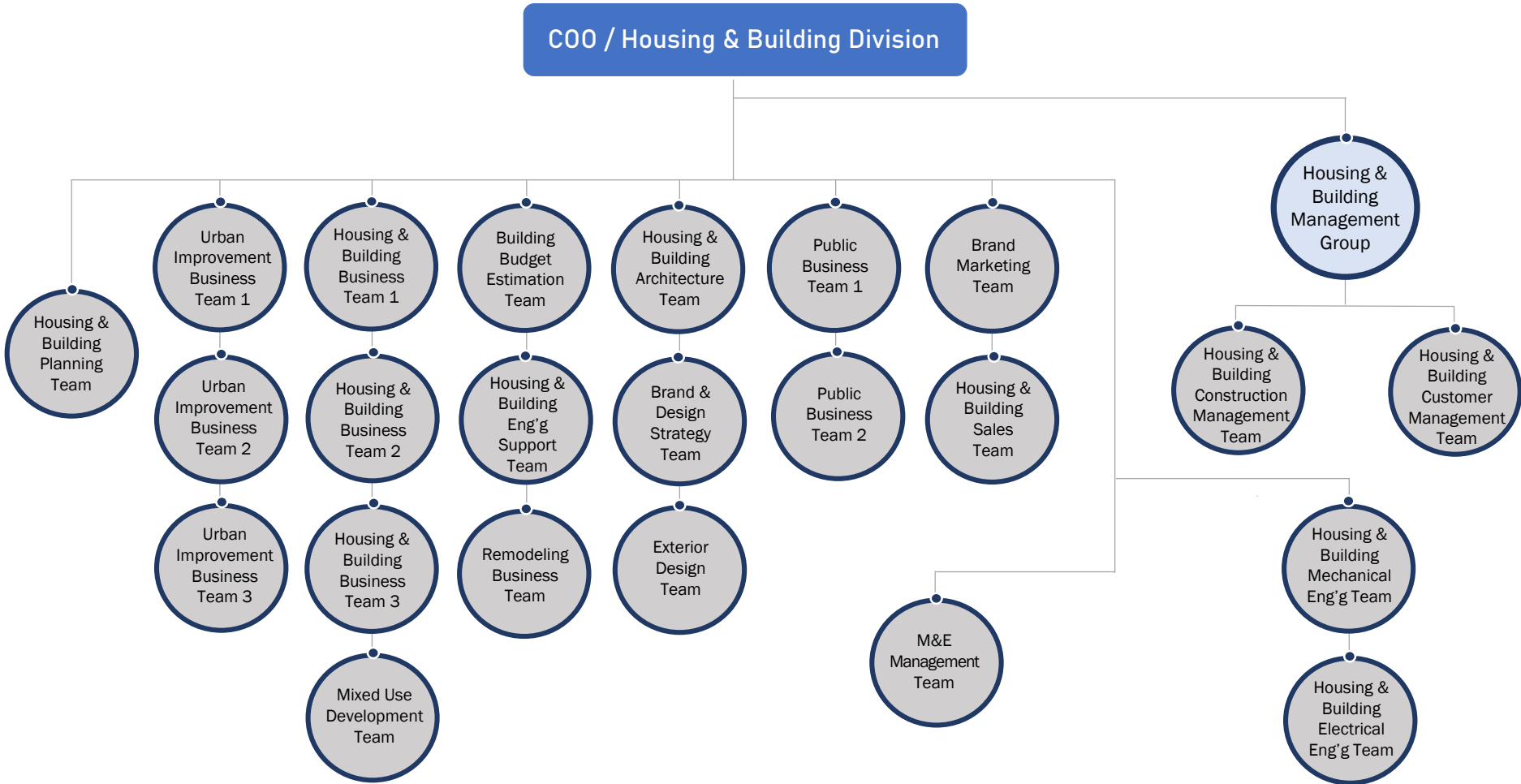
ORGANIZATION – Plant Division



ORGANIZATION – Civil Division



ORGANIZATION – Housing & Building Division



2022 Business Highlights

(Unit : U\$ Mil.)

Year 2022



11,539

New Order



8,509

Sales



621

Operating Profit



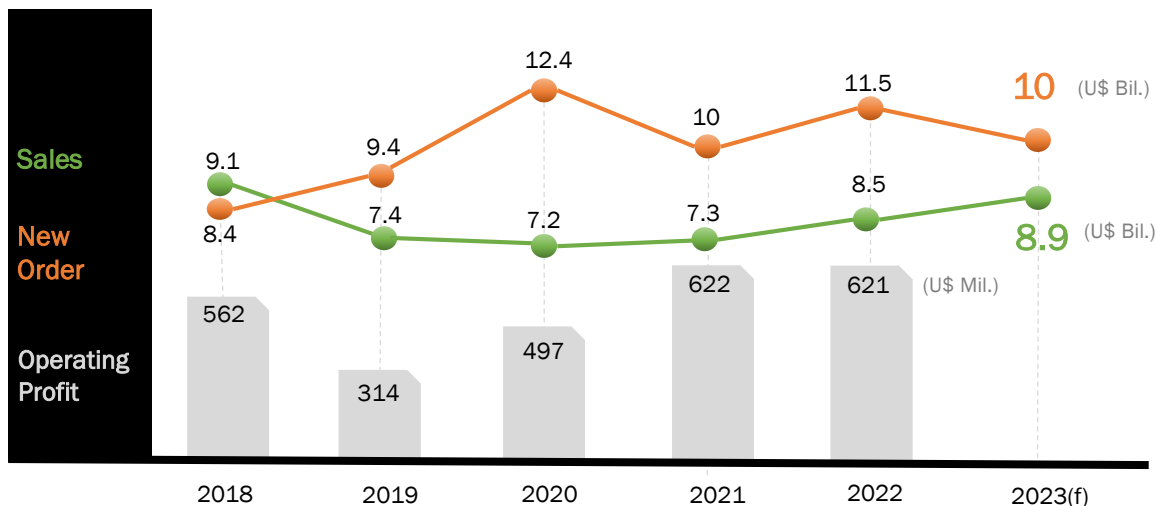
37,314

Backlogs

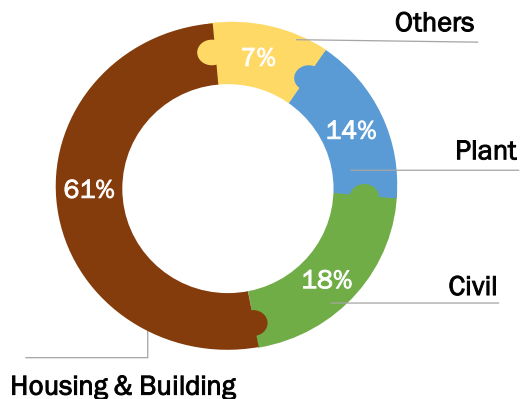


A (Stable)
Credit Rate

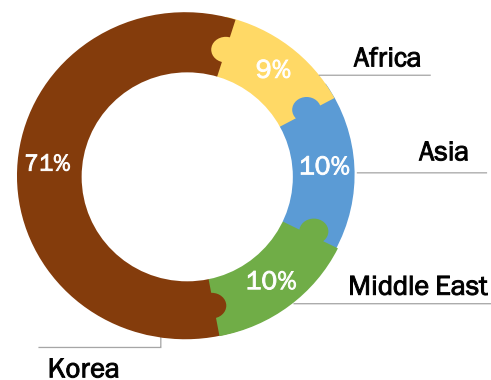
Financial Record



2022 Sales by Business Sector



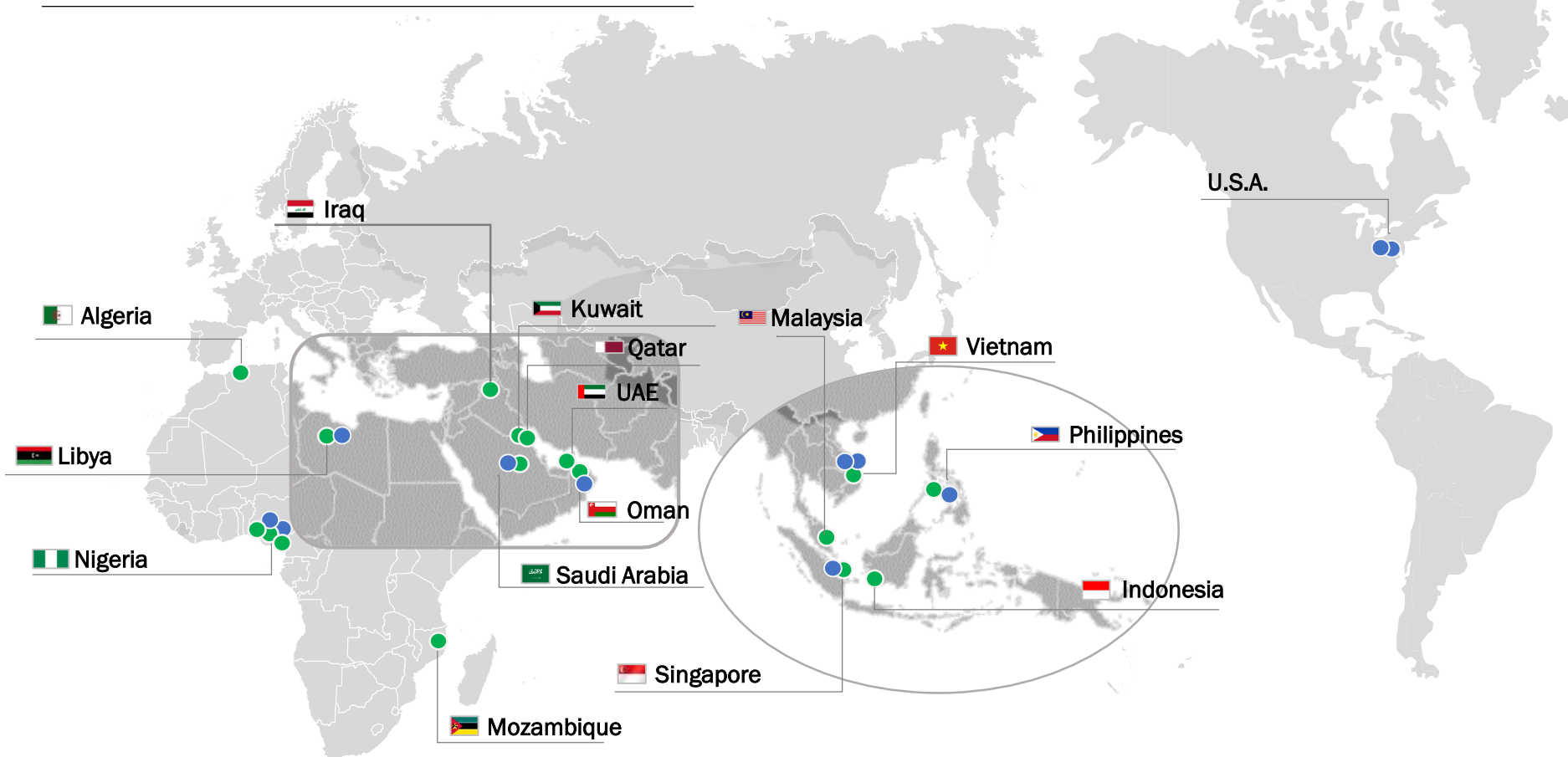
2022 Sales by Geographic Area



* Rated by Korea Investors Service, Inc

Global Network

● Regional Branch Office(17) ● Overseas Subsidiary (11)



Africa

- Nigeria Nigeria & Central Africa Regional Office
Abuja Office / Lagos Office
Subsidiary (2)
- Algeria Algeria & Morocco Regional Office
- Libya Libya Tripoli Office / Subsidiary (1)
- Mozambique Mozambique Maputo Office

Middle East

- UAE UAE Dubai Office
- Qatar Qatar Doha Office
- Saudi Saudi Al Khobar Office / Subsidiary (1)
- Kuwait Kuwait Kuwait Office
- Iraq Iraq Baghdad Office
- Oman Oman Muscat Office / Subsidiary (1)

Asia, Pacific & Others

- Singapore Singapore Office / Subsidiary (1)
- Malaysia Malaysia Kuala Lumpur Office
- Philippines Philippines Manila Office / Subsidiary (1)
- Indonesia Indonesia Jakarta Office
- Vietnam Vietnam Hanoi Office / Subsidiaries (2)
- U.S.A U.S.A Subsidiaries (2)

Ongoing Overseas Projects

● Infra. Works (13)
 ● Oil&Gas (10)
 ● Power (2)
 ● Housing & Building (4)
 ● Development (1)

Africa

- Algeria**
- Boughzoul New Town
 - El Harrach River Maintenance
 - Djen-Djen Container Terminal
 - Ras Djinet Power Plant

- Nigeria**
- Gbaran Infill
 - Indorama Fertilizer Train 2
 - NLNG Train 7
 - Warri Refinery Quick Fix
 - Kaduna Refinery Quick Fix

- Mozambique**
- LNG Area 1

- Libya**
- Zwitina Power Plant

Middle East

- Kuwait**
- Al Zour Refinery PKG 2-3

- Oman**
- Duqm Refinery PKG 1

- Iraq**
- Al Faw Grand Port Ph. 1
Marine Infra. + Immersed Tunnel
 - Al Faw Port Entrance Roads
 - Al Faw Container Terminal PKG 1

Oceania

- Papua New Guinea**
- LNG CPF FEED Ph. 1

Asia

- Singapore**
- Cross Island Line CR108
 - Jurong Region Line J109
 - Woodlands Health Campus

- Vietnam**
- Star Lake Development
 - B3CC1 Complex
 - B1CC4 Office
 - THT Ph.2 Infra. Works
 - Phu Quoc Housing Development Ph.1

- Indonesia**
- Tangguh LNG Expansion Ph. 2

- Philippines**
- Jalaur River Multipurpose Dam

- Hong Kong**
- Fanling Bypass Road (Eastern Section)

- India**
- Bihar Extradosed Bridge
 - Mumbai Trans Harbor Link



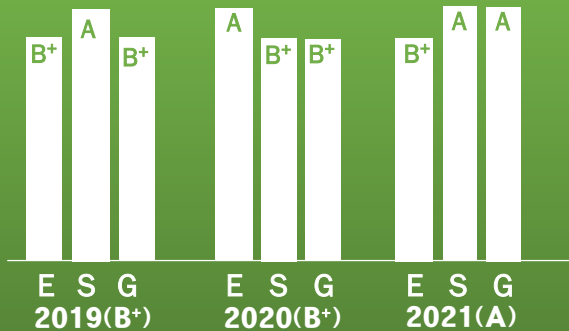
Sustainability Management

ESG

ENVIRONMENT SOCIAL GOVERNANCE STRUCTURE

ESG refers to the three central factors in measuring the sustainability and societal impact for an investment in a company or business

KCGS* Detailed Assessment Results



* Korea Corporate Governance Service

Environment Policy

Reduce environmental violation and environmental accident to zero

Set and achieve energy and resource saving targets

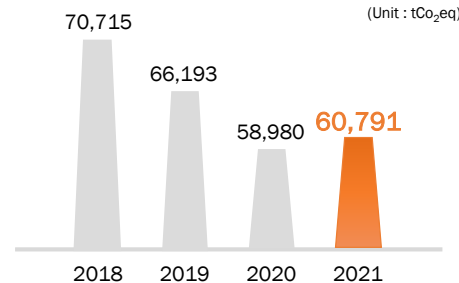
Set and achieve waste disposal cost targets against sales

Environmental Management System



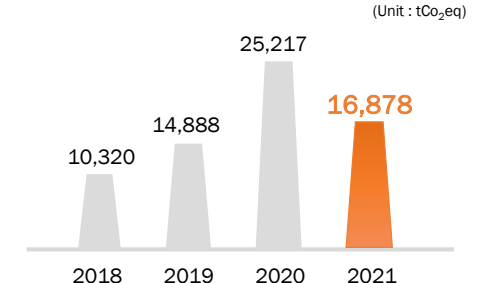
ISO 14001 Certification

Greenhouse Gases Emission



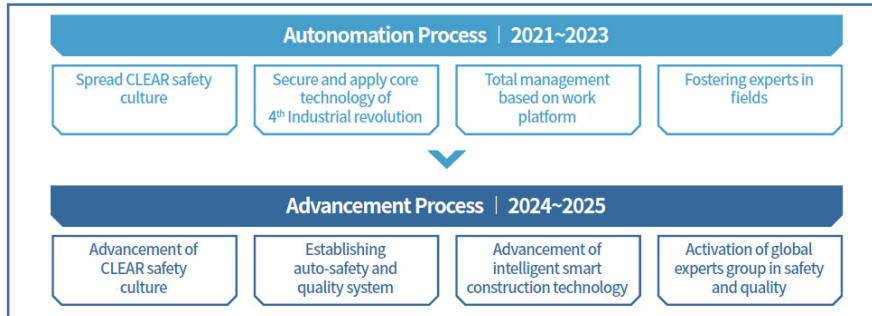
2021 Greenhouse Gases allowed by Korean Government : 77,669 tCO₂eq

Greenhouse Gases Reduction



HSE-Q Management

Safety and Health Strategy System



ISO 9001 certification
Quality Management System



ISO 14001 certification
Environmental Management System



ISO 45001 certification
Occupational Safety & Health Management System



ISO 37001 certification
Anti-Bribery Management System

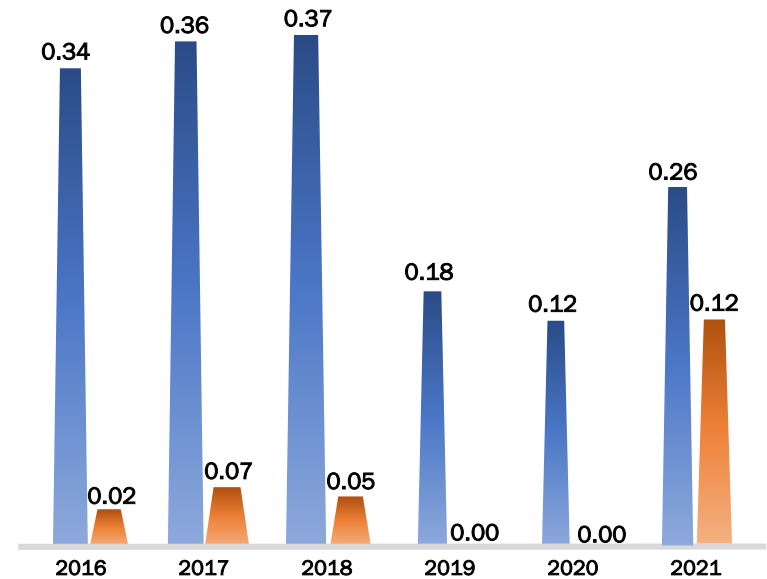


KOSHA-MS certification
Occupational Safety & Health Management System

Daewoo E&C prioritizes worker's life and safety over profitability and has a safety and health system to respond to disasters and industrial accidents that may occur at construction sites. We strictly repair and maintain the construction machinery and strengthen the autonomous safety system where workers protect each other with internalized safety culture

HSE Performance – HSE statistics

TRIR (Total Recordable Incident Rate)
LTIR (Lost Time Incident Rate)



(Per 1,000,000 Man-hours worked)

Major Experiences

PLANT BUSINESS

Oil & Gas
Upstream
Refinery
LNG

Power
Gas Fired
Coal Fired
Cogeneration
Nuclear & Hydrogen



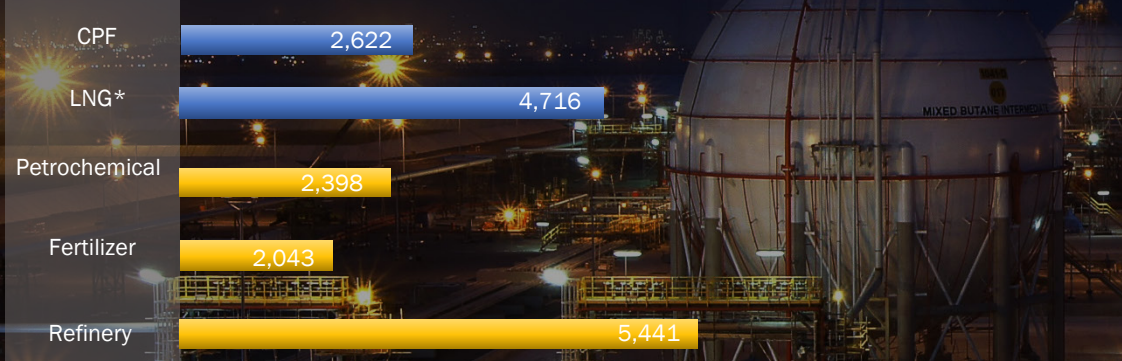
Major Experiences

Plant

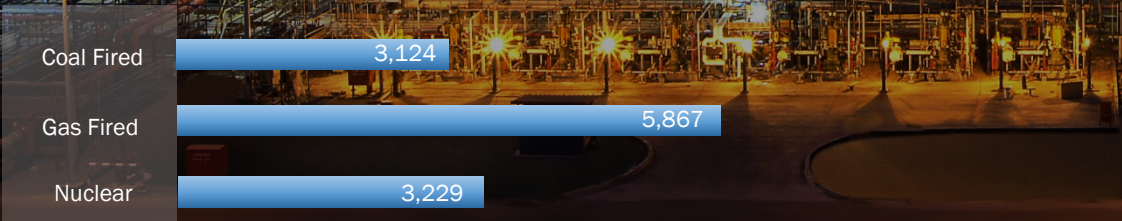
(Unit : U\$ Mil.)

Cumulated project contract amounts since 2011

Oil & Gas



Power



Performance

New Order



Sales



* LNG Liquefaction, Regasification, Storage Tank

Major Experiences

Plant - Oil & Gas

1 LNG Train, Nigeria

Unit 1, 2, 3, 5, 6, 7

2 Ulsan S-OIL RUC, Korea

The largest as a single plant
110,000 tons of steel structures
used the first modular process in
Korea

3 Al Zour Refinery, Kuwait

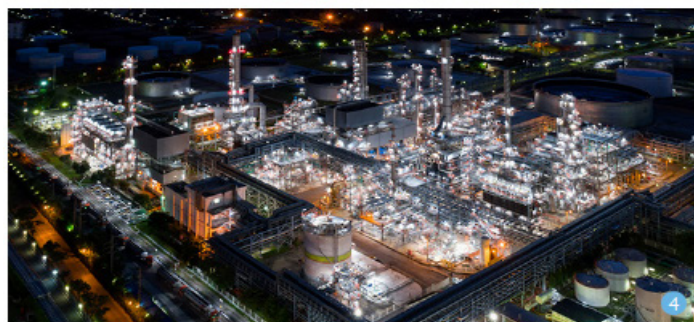
One of the largest refineries in
the world producing 615,000
barrels per day

4 Jazan Refinery, Saudi Arabia

EPC for Naptha & Aromatics
complex (Gasoline blend of two
gasoline grades, paraxlene and
benzene)

5 Jorf Lasfar ODI Fertilizer Plant, Morocco

Phosphoric Acid 58,3 ton/h &
Sulfuric Acid 4,200 mt/d



Major Experiences

Plant - Oil & Gas



Upstream

- Gbaran-Ubie CPF
- 1,000 MMscfd (Nigeria)
- Gbaran Infill CPF
- 600 MMscfd (Nigeria)
- Otumara Node CPF
- 30 MMscfd (Nigeria)
- Cawthorne Gas Gathering
- 200 MMscfd (Nigeria)
- Ogbainbiri Flowstation
- 192 MMscfd (Nigeria)
- AKKAS CPF
- 480 MMscfd (Iraq)
- Zubair DGS PKG
- 50,000 BPD x 2 (Iraq)
- Hout Onshore Gas Facilities
(Saudi Arabia)
- CAFC Oil CPF PJ
- CPF 32,000 BPD
- Eastern Gas Pipeline
- 40" x 56km (Nigeria)
- NLNG Ph3. Gas Line
- 10~24" x 190km (Nigeria)



LNG Liquefaction

- Mozambique LNG Area 1/SMP
- 6.4 MTPA x 2 (Mozambique)
- Nigeria LNG #7 / EPC
- Total 8 MPTA Train & CLU (Nigeria)
- PNG LNG / General Const.
- 3.1 MTPA x 2 (Papua New Guinea)
- Arzew LNG 3Z / SMP & E&I
- 4 MTPA x 1 (Algeria)
- Sakhalin LNG II / SMP & E&I
- 4.8 MPTA x 2 (Russia)
- Nigeria LNG #6 / General Const.
- 4.8 MPTA x 1 (Nigeria)
- Nigeria LNG #5 / General Const.
- 4.8 MPTA x 1 (Nigeria)
- Nigeria LNG #3 / Civil & Mech.
- 2.88 MPTA x 1 (Nigeria)
- Nigeria LNG #1,2 / Mech. & Elec.
- 2.88 MPTA x 2 (Nigeria)
- Yemen LNG Tank (EPC)
- 140,000m³ x 2 (Yemen)



LNG Regasification

- Incheon LNG (Korea)
- #4, #5, #6
: LNG Tank 100,000m³ x 3
- #13, #14, #15, #16
: LNG Tank 200,000m³ x 4
- #17, #18
: LNG Tank 200,000m³ x 2
- Tongyeong LNG (Korea)
- #201, #202, #203
: LNG Tank 140,000m³ x 3
- #208, #209, #210
: LNG Tank 140,000m³ x 3
- #213, #214
: LNG Tank 200,000m³ x 2
- Pyeongtaek LNG (Korea)
: #22, #23 LNG Tank
200,000m³ x 3
- Samchuk LNG (Korea)
- #5, #6, #7
: LNG Tank 200,000m³ x 3



Downstream, Refinery, Fertilizer etc

- Duqm Refinery (Oman)
- 230,000 BPD, Process Unit
- Al Zour Refinery Package 2&3
- Ancillary Process / Offsite
& Utilities (Kuwait)
- Laffan Refinery
- Condensate, Naphtha,
Kerosene / Petroleum
Product Tanks (Qatar)
- Jazan Refinery
- Gasoline, Paraxylene,
Benzene (Saudi Arabia)
- Clean Fuels Project
- Upgrade & Expansion of
Refinery (Kuwait)
- Rewais Refinery (UAE)
- Tanks Farm Package
- Q-Chem II Ethylene (Qatar)
- Escravos Gas to Liquid (Nigeria)
- Indorama Fertilizer (Nigeria)
- Algeria Oman Fertilizer (Algeria)

Major Experiences

Plant - Power

1 Safi IPP, Morocco

693MW x 2 unit ultra-supercritical coal-fired power plant



2 Jorf Lasfar Power Plant Unit #5&6, Morocco

350MW x 2 supercritical coal-fired power plant



3 Sur IPP, Oman

2,000MW class combined cycle power plant



4 Sihwa Lake Tidal Power Plant, Korea

254MW (25.4MW x 10 unit)
Tidal Gate : 3EA (B18.3 x H24 x L44.4)



5 Shin-wolseong Nuclear Power Plant, Korea

Pressurized water reactor 1,000 MW x 2 unit



Major Experiences

Plant - Power



Gas Fired

- Pocheon CCPP
- 950MW (Korea)
- Ras Djinet CCPP
- 1,200MW (Algeria)
- Pyeongtaek #2 CCPP
- 920MW (Korea)
- Benghazi CCPP
- 750MW (Libya)
- Sur IPP
- 2,000MW (Oman)
- Misurata CCPP
- 750MW (Libya)
- Shuweihat 3 IPP
- 1,600MW (UAE)
- Afam VI CCPP
- 650MW (Nigeria)
- Benghazi North CCPP
- 300MW (Libya)
- Nam-Jeju CCPP
- 160MW (Korea)
- Shin-pyeongtaek CCPP
- 950MW (Korea)



Coal Fired

- Safi IPP
- 1,386MW (Morocco)
- Samcheok TPP #1&2
- 2,250MW (Korea)
- Dangjin Blast Furnace Gas Power Plants #1~8
- 800MW (Korea)
- Jorf Lasfar TPP 5&6
- 700MW (Morocco)
- Boryeong TPP #7&8
- 1,000MW (Korea)
- Hadong TPP #1~6
- 3,000MW (Korea)
- Zargan TPP #2
- 145MW (Iran)
- Seohae TPP #1&2
- 400MW (Korea)
- Ulsan TPP #4~6
- 1,200MW (Korea)



Cogeneration

- Gwanggyo Energy Complex
- 144MW (Korea)
- South-Western Daejeon Energy Complex
- 48.3MW (Korea)
- Paju Combined Heat Power
- 515MW (Korea)
- Hwaseong Combined Heat Power
- 505MW (Korea)
- Incheon Nonhyun Combined Heat Power
- 24MW (Korea)
- UPSC Cogeneration Power Plant Ph 3
- 50MW (Korea)
- Ulsan Power Plant Extension
- 200MW (Korea)
- UPSC Cogeneration Power Plant #2
- 40MW (Korea)
- UPSC Cogeneration Power Plant #1
- 40MW (Korea)
- Busan Dyeing Complex Cogeneration Power Plant
- 260MW (Korea)
- Mokdong Cogeneration Power Plant
- 40MW (Korea)



Nuclear & Hydro

- Jordan Research & Training Reactor
- 5MW (Jordan)
- Shin-wolsong Nuclear Power Station #1&2
- 2,000MW (Korea)
- Wolsong Nuclear Power Plant #3&4
- 1,400MW (Korea)
- Patrind Hydro Electric Power Station
- 150MW (Pakistan)
- Bohyun Hydropower Dam
- 170kW (Korea)
- Hwabuk Hydropower Dam
- 400kW (Korea)
- Sihwa Lake tidal Power Plant
- 254MW (Korea)
- Dauliganga Hydropower Dam
- 280MW (India)
- Houay Ho Hydropower Dam
- 150MW (Laos)

Major Experiences

CIVIL

Transportation
Habor & Shipyard
Tunnel, Airport, Dam
Environment

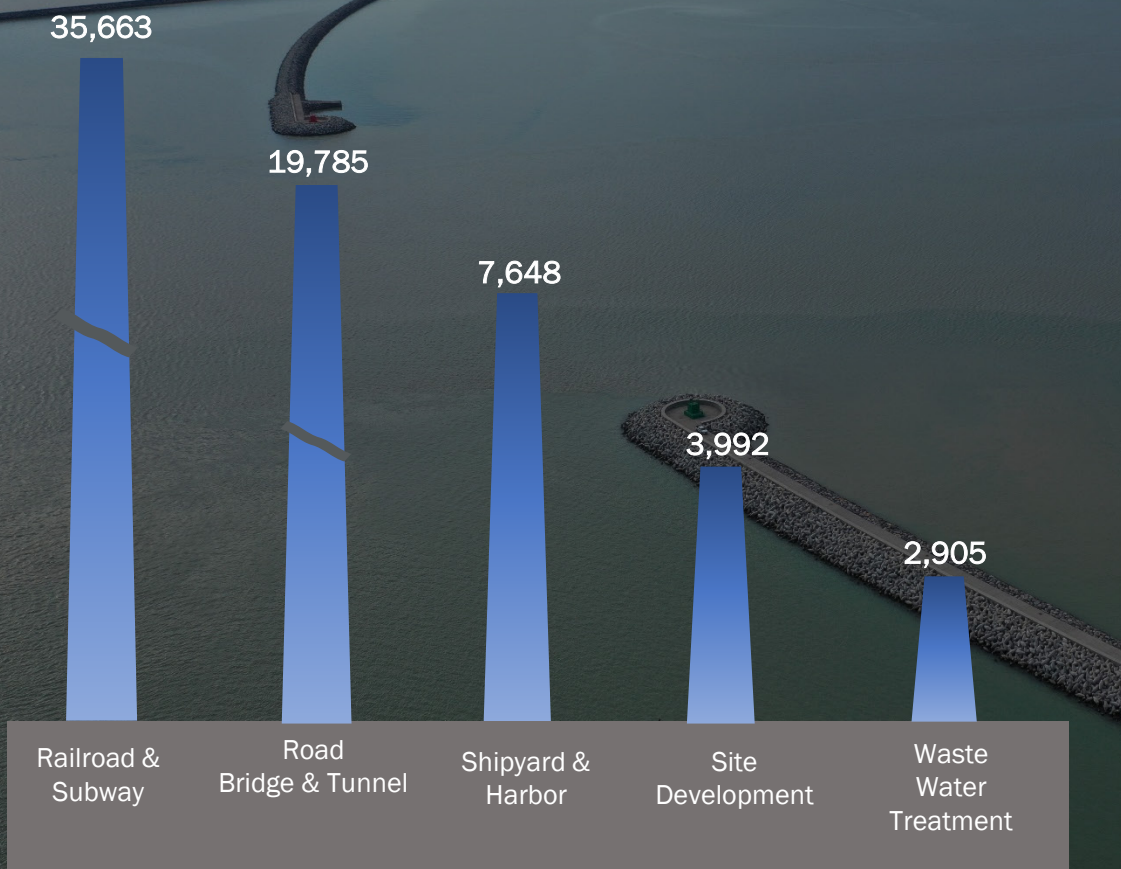


Major Experiences

Civil

(Unit : U\$ Mil.)

Cumulated project contract amounts since 2011



Performance

New Order

2021	1,466
2022	1,375

Sales

2021	1,201
2022	1,548

Major Experiences

Civil

1 GK Fixed Link, Korea

World's longest immersed tunnel (3.7km) included world's top 5 records

2 Kazungula Bridge & Approach ramps, Botswana & Zambia

Total length of 923m extradosed bridge and access road

3 Donghongcheon-Yangyang Highway, Korea

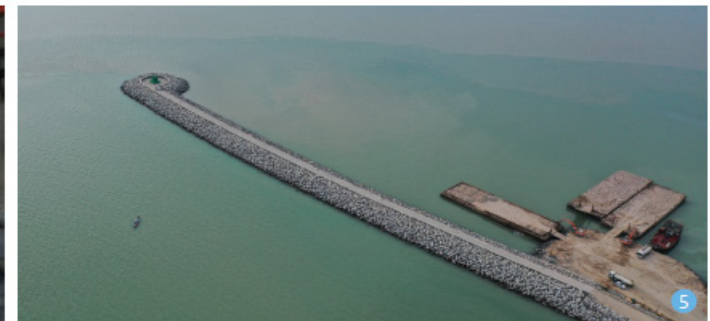
Inje Tunnel, the longest in Korea (10.96km) including 71.7km with four lanes

4 Thomson Line MRT T216, Singapore

Total length 3,200m (Shield tunnel 2,930m, station 180m)

5 Al Faw Western Breakwater Project, Iraq

World's largest breakwater (15.8km)



Major Experiences

Civil



Transportation

- Honam High Speed Railroad #1-1, 1-4
- 182km (Korea)
- Seoul-Busan High Speed Railroad #4, 8, 10, 13, 14
- 55.7km (Korea)
- Bandar Abbas-Bafq Railroad
- 62.6km (Iran)
- Thomson MRT 216
- 3.2km (Singapore)
- Bundang Subway Line Section. 3
- 1.66km, 20 m Immersed tunnel (Korea)
- Meki-Zeway Highway
- 37km (Ethiopia)
- New Orbital Highway
- 42km (Qatar)
- Lahore-Islamabad Motorway
- 350km (Pakistan)
- Tripoli Area Road
- 140km (Libya)
- Bihar Extradosed Bridge
- 22.76km (India)
- Kazungula Bridge
- 1km (Botswana / Zambia)



Harbor & Shipyard

- Al Faw Container Terminal
- 4.5km Break water
- 1.7km Quay wall (Iraq)
- Al Faw Grand Port
- 16km Western break water(Iraq)
- Djen Djen Container Terminal
- 1.5km Quay (Algeria)
- Extension of Djen Djen port
- 750m Break water (Algeria)
- Busan New Port South Container Terminal
- 1.1km Quay (Korea)
- Sohar Breakwater
- 7km Breakwater (Oman)
- North Breakwater in Busan Port
- 1km Breakwater (Korea)
- Nakilat Dry Dock & Ship Repair Yard
- Quay 2x400m, 200m Dock (Qatar)
- Duqm Dry Dock & Ship Repair Yard
- Dock 2x410m (Oman)



Tunnel, Airport, Dam

- Chuncheon-Yangyang Highway 4 tunnels
- 23,057m (Korea)
- Donghongcheon-Yangyang Highway
- 10.96km tunnel (Korea)
- Busan-Geoje Fixed Road
- 3,240m immersed tunnel (Korea)
- Khor Al Zubair Immersed Tunnel
- 1,260m immersed tunnel (Iraq)
- KL Int'l Airport Runway #1 Taxiway
- 4.5km (Malaysia)
- Houay Ho Hydropower Dam
- 399m x 76.5m (Laos)
- Dhauliganga Hydroelectric Dam
- 270m x 57m (India)
- Patrind Hydropower Dam
- 180m x 43.5m (Pakistan)
- Jalaur Dam
- 267m x 109m (Philippines)



Environment

- Nanji Sewage Treatment Plant
- 1,000,000 m³/d (Korea)
- Gulpocheon Sewage Treatment Plant Phase I & II
- 900,000 m³/d (Korea)
- Busan Suyeong Sewage Treatment Plant
- 264,000 m³/d (Korea)
- Mokdong MSW* Incineration & Cogeneration Power Plant
- 150 t/d, 40mw (Korea)
- Bucheon MSW Incineration Plant
- 300 t/d (Korea)
- Sihwa Tidal Power Plant
- 254MW (Korea)
- Daegu Organic Waste to Energy Plant
- 300 ton/d (Korea)
- Jeju Island Photovoltaics Power Plant
- 79 units of photovoltaics, 47.5MW (Korea)

* MSW : Municipal Solid Waste

Major Experiences



HOUSING & BUILDING

Commercial
Hospital
Hotel, Public, Educational, Stadium
Residential & Housing

Major Experiences

Housing & Building

(Unit : US\$ Mil.)

Cumulated project contract amounts since 2011



Performance

New Order



Sales



Major Experiences

Housing & Building

1 Star Lake City, Vietnam

Development of central area of Tay Ho Tay in Hanoi (Total Area : 207,66 ha)

2 Seoul Dragon City Hotelplex (Novotel Ambassador), Korea

39 storey & 4 basement, 3 buildings, 1,730 hotel rooms

3 Incheon International Airport Passenger Terminal I, Korea

4 storey & 2 basement (44 Mil. Passengers per year)

4 NEATT (North East Asia Trade Tower), Korea

68 storey & 4 basement, 305m height (2nd Highest in Korea) Business & Residential

5 Telekom Malaysia HQ Building, Malaysia

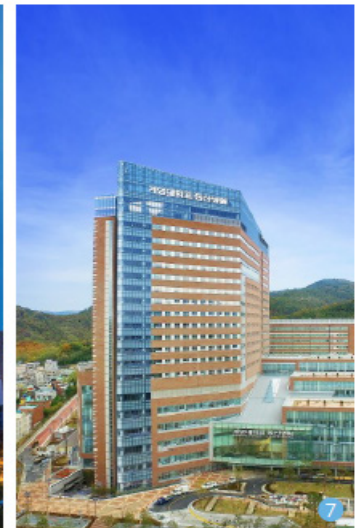
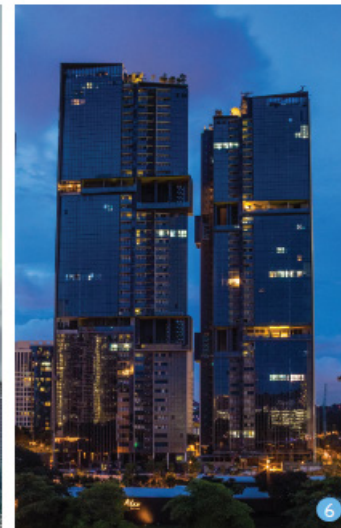
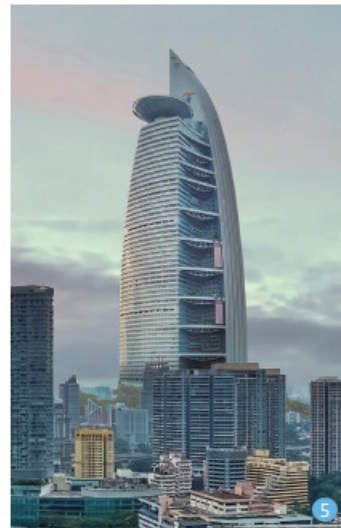
77 storey & 4 basement with auditorium, multi-purpose hall

6 Alexandra View Condominium, Singapore

43 storey building of 2 blocks

7 Keimyung University Dongsan Medical Center, Korea

20 storey & 5 basement, 1,033 bed hospital building



Major Experiences

Housing & Building



Commercial

- District 8 Development
- 56 & 41 Storey Office, 2 Blk (48 Storey) (Indonesia)
- Public Bank Office Tower
- 40 Storey & 6 Basement Office Tower (Malaysia)
- IB Tower
- 58 Storey & 4 Basement Office Tower (Malaysia)
- Northeast Asian Trade Tower
- 68 Storey Building & 3 Basement (Korea)
- Seoul Square - TFA: 132,865m², 25 Storey (Korea)
- Telekom Malaysia HQ Building
- 77 Storey & 4 Basement Office Tower (Malaysia)
- ASEM Tower & COEX Complex
- 41 Storey & 4 Basement / 5 Storey & 5 Basement (Korea)



Hospital

- Woodlands Health Campus Contract 2 & 3
- 1,800 Bed (Singapore)
- Keimyung University Donsan Medical Center
- 1,033 Bed (Korea)
- Busan National University Yansan Hospital
- 772 Bed (Korea)
- Gangnam Severance Hospital Main Building, etc.
- 758 Bed (Korea)
- New Benghazi Central Hospital
- 1,200 Bed (Libya)
- Tripoli Central Hospital
- 1,438 Bed (Libya)
- Benghazi Central Hospital
- 1,322 Bed (Libya)
- Yonsei Severance Cerebrovascular Center
- 10 Storey & 2 Basement (Korea)



Hotel, Public, Educational, Stadium

- Yongsan Hotel
- 3 Buildings of 39 Storey & 4 Basement (Korea)
- St. Regis Hotel
- 48 Storey & 3 Basement (Malaysia)
- JW Marriott Tripoli Hotel
- 370 Rooms, 36 Storey & 2 Basement (Libya)
- Algiers Hilton Hotel
- 11 Storey & 1 Basement (Algeria)
- The Collage of Information Technology Building
- TFA: 36,675m² (UAE)
- SNU Educational & Research Center
- TFA: 16,336m² (Korea)
- Gwangmyeong Indoor Velodrome
- 10,896 Seats (Korea)
- Busan Asiad Sport Complex
- 62,300 Seat (Korea)



Residential & Housing

- Star Lake City
- Development the Central Area of Hanoi (Vietnam)
- Pasir Ris Parcel 5 Condominium
- 912 Units of 11-13 Storey (Singapore)
- Yeouido Daewoo Trump World I
- 327 Units 2 Blk of 41 Storey & 5 Basement (Korea)
- Trump World
- 69 Storey & 1 Basement (USA)
- Lake Town PRUGIO Cheonan
- 995 Units TFA: 13,511m² (Korea)
- Worldmark WestEnd
- 991 Housing 42 Storey & 3 Basement (Korea)
- Country Club Village 7 Build.
- 832 Apt. Units (USA)
- Tripoli 4,608 Housing Unit
- 4,608 Housing Unit (Libya)
- Housing & Development Board Housing
- 8,000 Housing Units (Singapore)

Thank you

170, Eulji-ro, Jung-gu, Seoul, Republic of Korea

If you have any enquiry, please contact us.

Phone : +82 2 2288 2928

Email : mina.kim@daewooenc.com



YOUR DREAM, OUR SPACE