

# 2023 COMPANY OVERVIEW



# CONTENTS

About us

Business Area

Organization

2022 Business Highlights

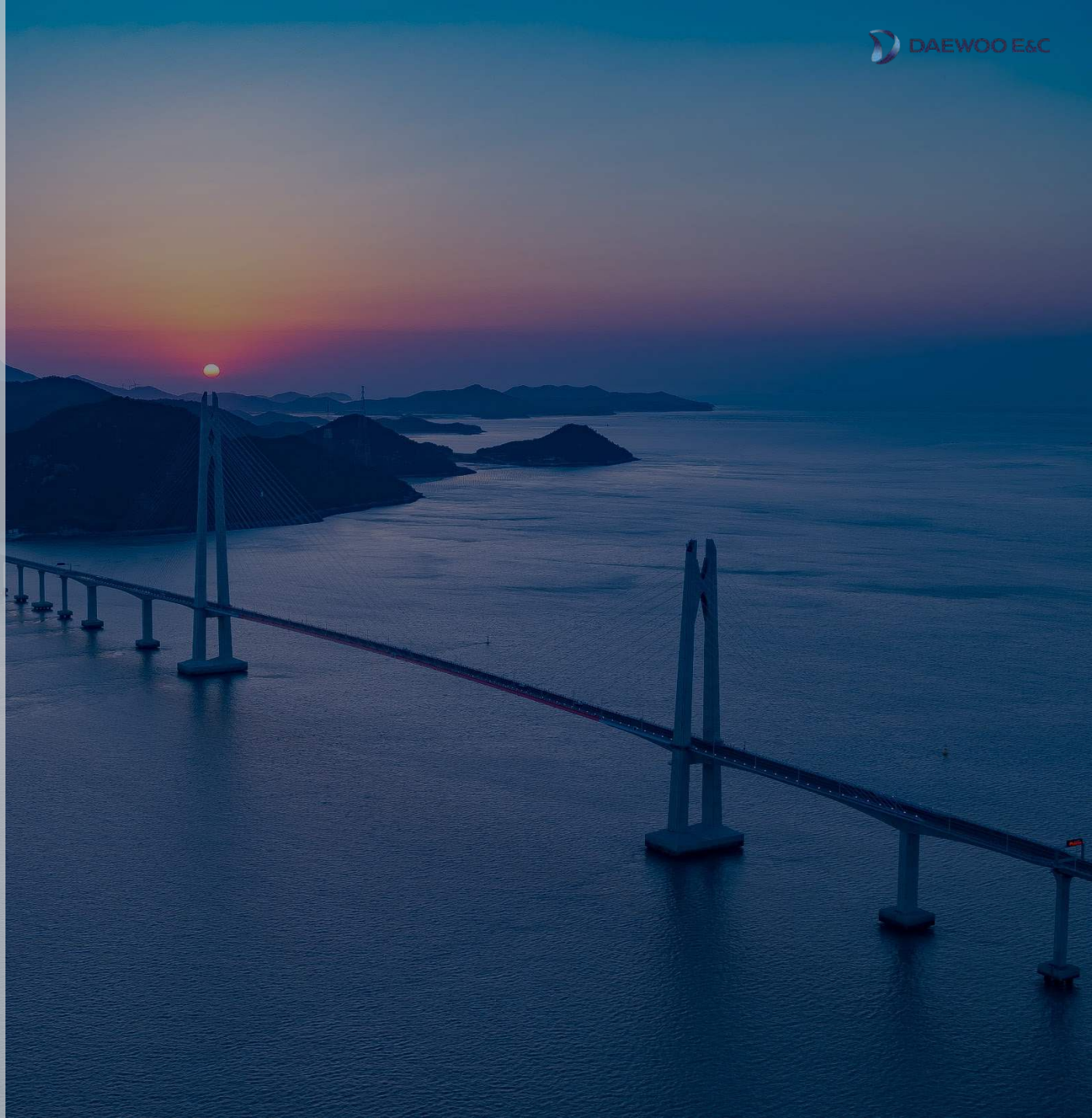
Global Network

Ongoing Overseas Projects

Sustainability Management

HSE-Q Management

Major Experiences



## About Us

---

### Company Name

Daewoo Engineering & Construction Co., Ltd.

### Foundation

November 1, 1973

### Head Office

170, Eulji-ro, Jung-gu, Seoul, 04548,

Republic of Korea

### Branches & Subsidiaries

2 Branches & 16 Subsidiaries in Domestic

17 Regional Branches & 11 Subsidiaries in Overseas

### Major Shareholders

Jungheung Group (50.75%)

National Pension Service (5.94%)

## Vision

# Your Dream, Our Space

Bringing customers' dream into real life

### Your Dream

- Future lifestyle dreamed by customers
- Sustainable company desired by management and employees
- Company fulfilling its roles and responsibilities for community
- Future embracing a variety of imaginary scenarios

### Our Space

- Space enhancing the customer value
- Happy workplace growing together with management and employees
- Environment where nature and technologies coexist for prosperity of mankind
- New world making imaginations come true

# Business Area

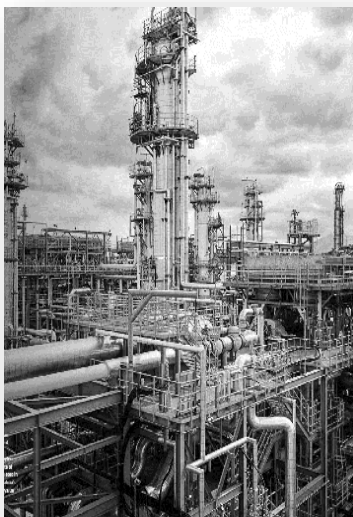
## OIL & GAS / POWER

### [Oil & Gas]

- LNG Liquefaction
- LNG Storage Tank & Regasification
- Upstream
- Refinery & Petrochemical
- Pipeline & Other Tank

### [Power]

- Combined Cycle Power
- Coal Fired Power
- Nuclear Power
- Hydro Power



## CIVIL

### [Civil]

- Road & Bridge
- Tunnel
- Shipyard & Harbor
- Railroad & Metro
- Airport
- Site Development
- Water Supply & Drainage
- Dam



## HOUSING & BUILDING

### [Housing]

- Apartments
- Residential
- Urban Living Housing

### [Building]

- Commercial
- Hotel
- Hospital
- Education Facility
- Public Facility
- Sports Complex
- Data Center & R&D Center



## INVESTMENT & DEVELOPMENT

### [Development]

- PPP (Equity+EPC)
- IPP (Equity+EPC+O&M)
- Real Estate

### [New Biz. Expansion]

- Newtown Development
- Asset Management
- Investment on Start-up



# ORGANIZATION - Leadership

As of January 2023



5,842  
Total Employees



4,022  
Engineers



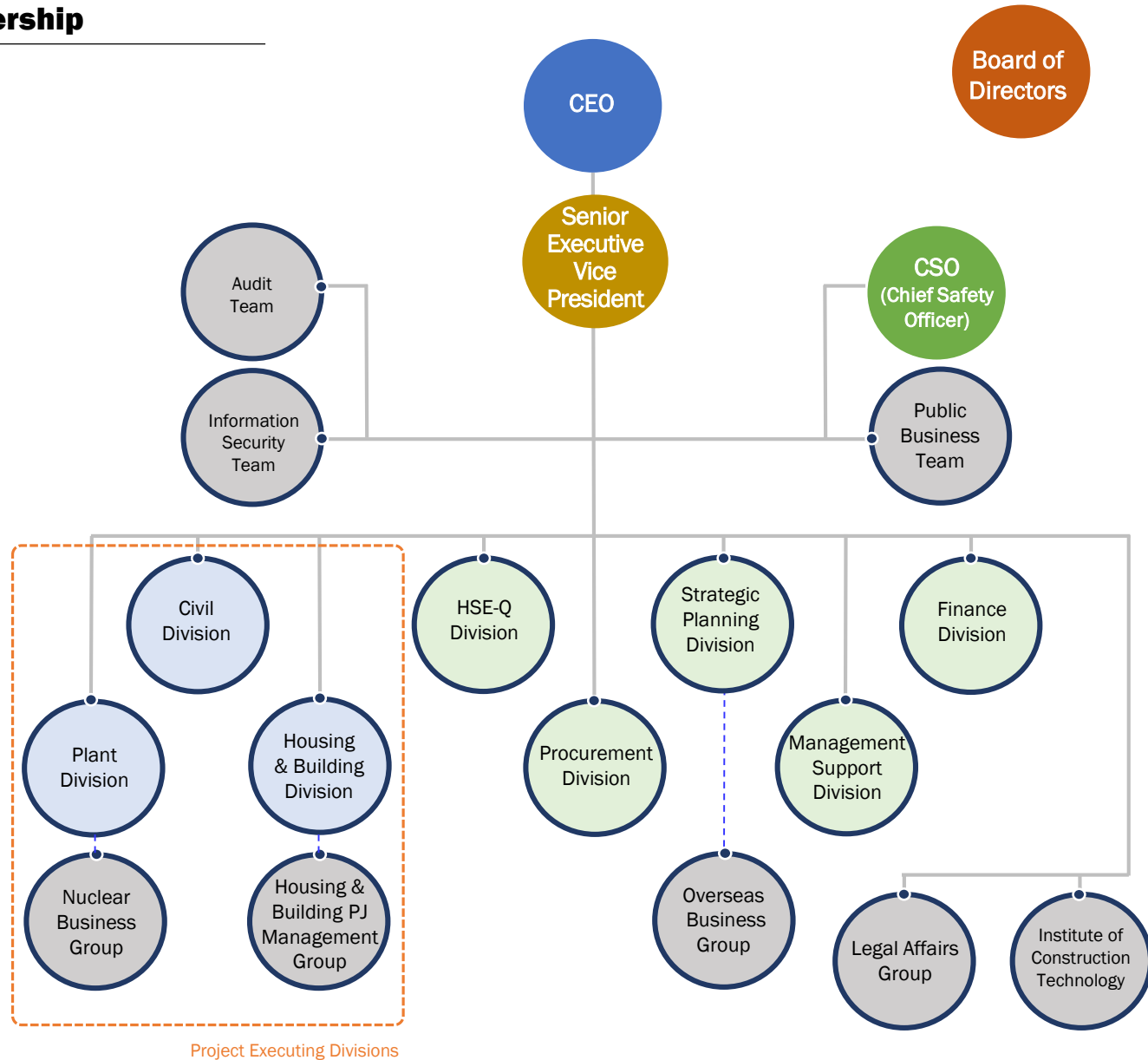
97  
Teams



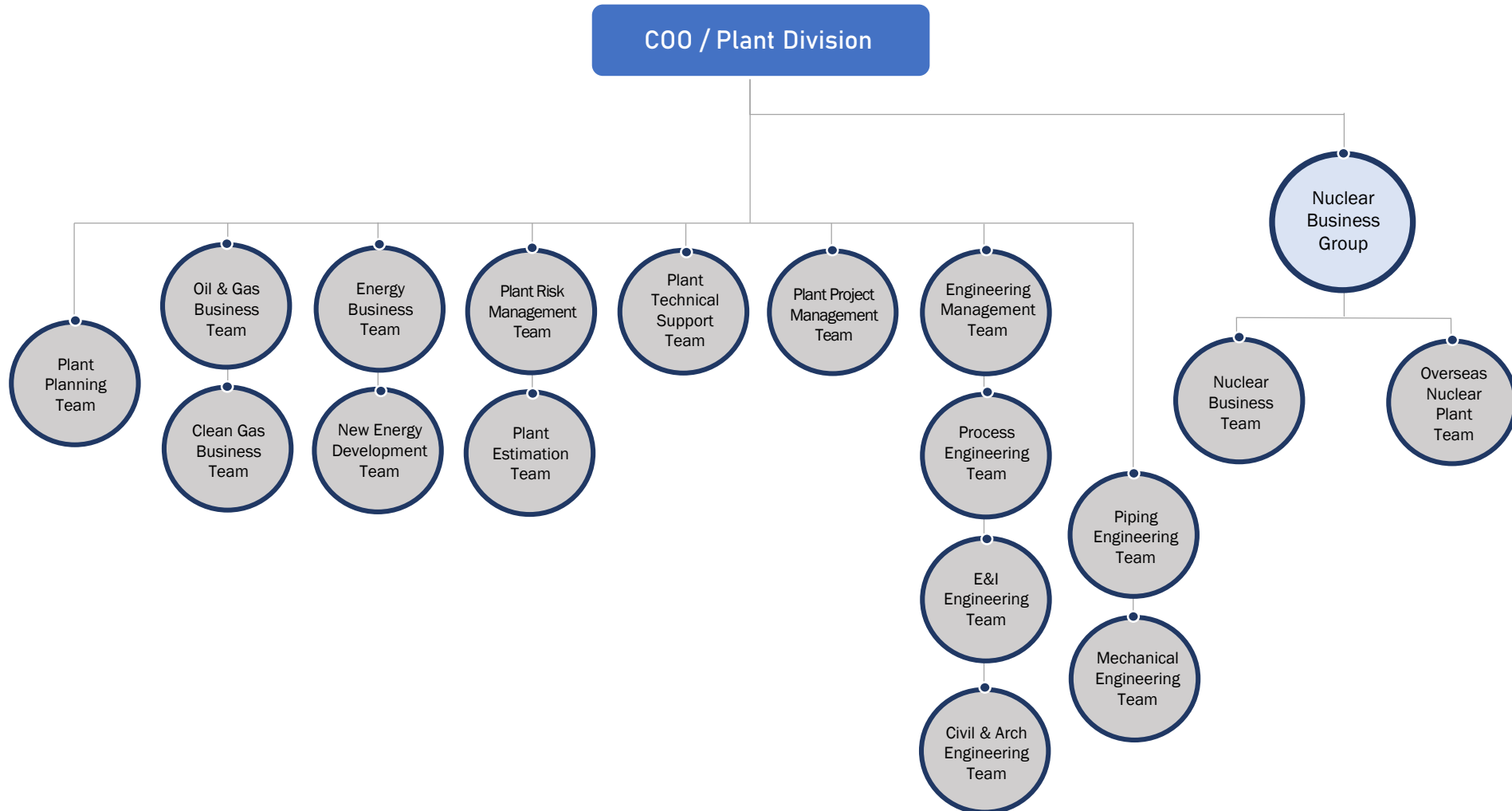
233  
Project Sites



1  
R&D Center



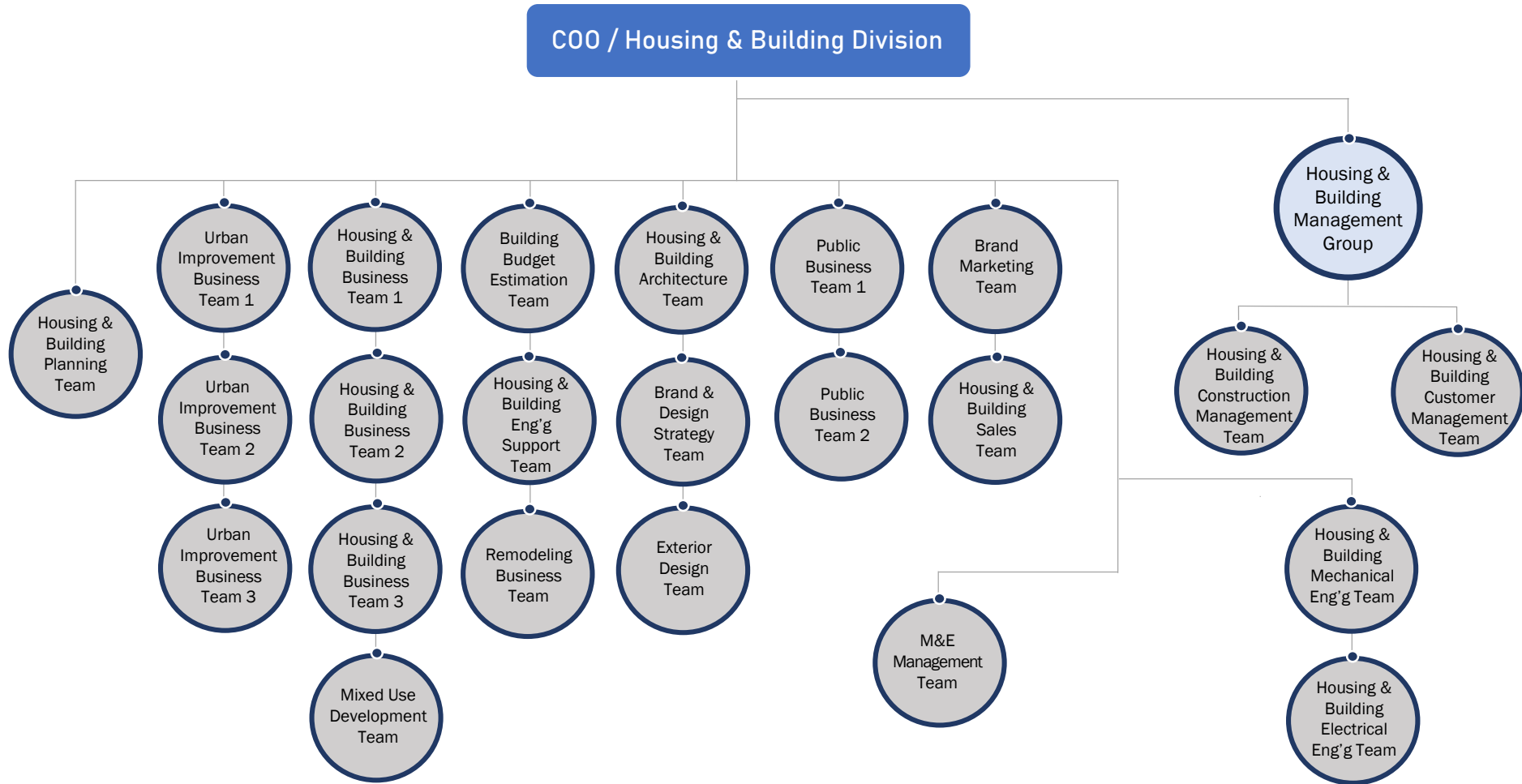
# ORGANIZATION – Plant Division



## ORGANIZATION – Civil Division



# ORGANIZATION – Housing & Building Division





# 2022 Business Highlights

(Unit : U\$ Mil.)

Year 2022



11,539

New Order



8,509

Sales



621

Operating Profit



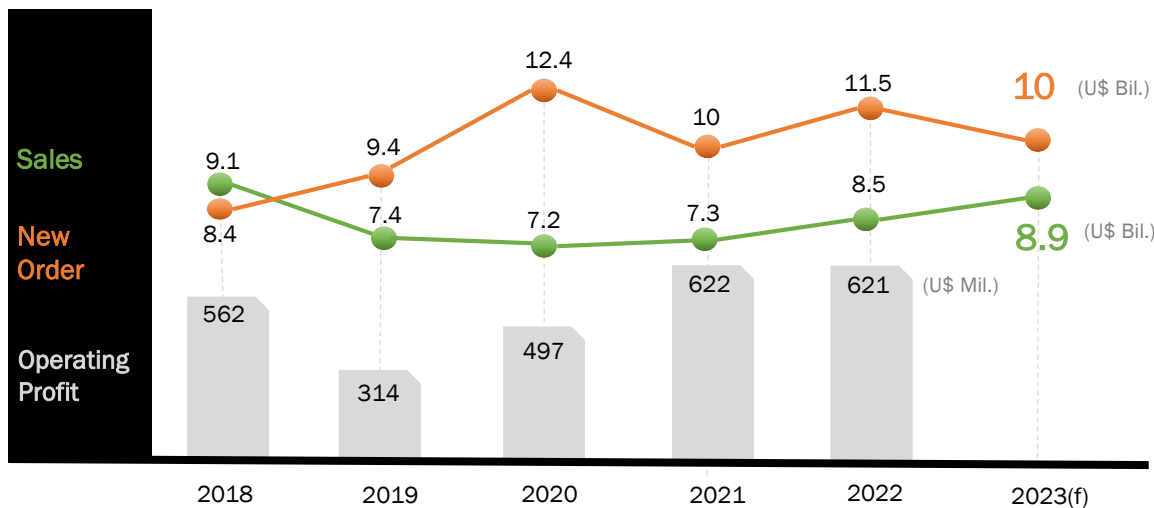
37,314

Backlogs

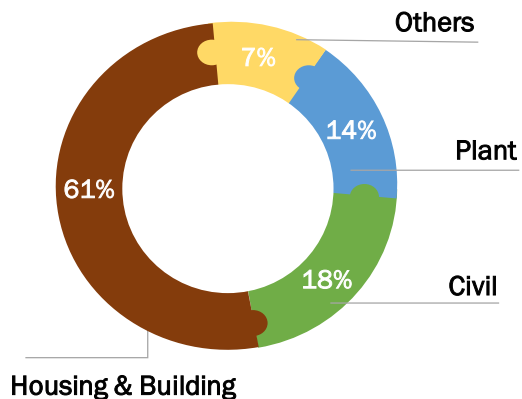


A (Stable)  
Credit Rate

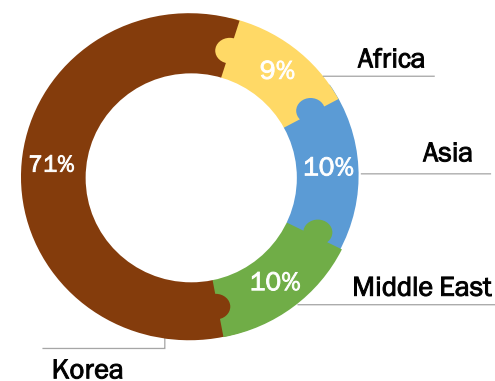
## Financial Record



## 2022 Sales by Business Sector



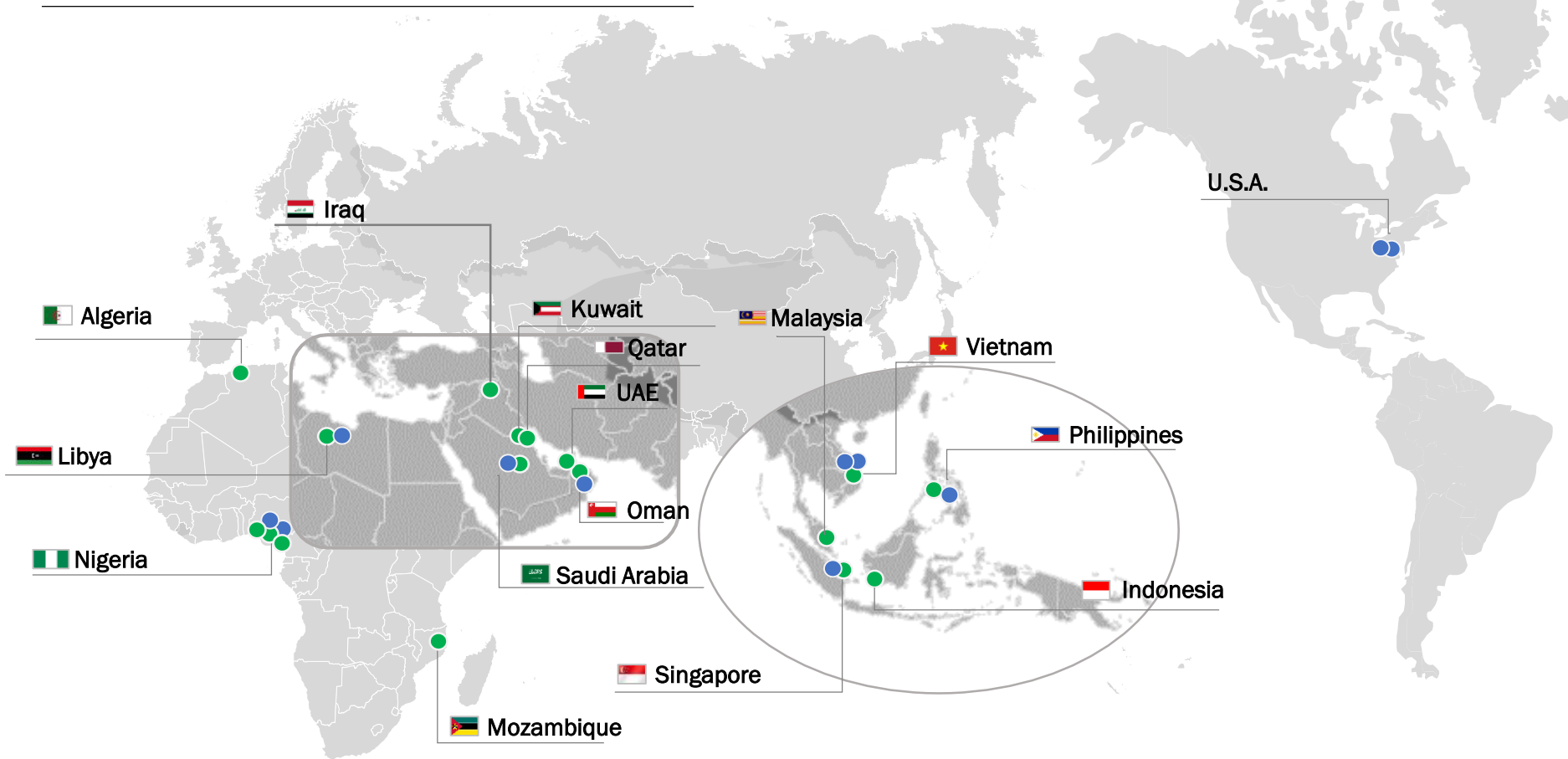
## 2022 Sales by Geographic Area



\* Rated by Korea Investors Service, Inc

# Global Network

● Regional Branch Office(17) ● Overseas Subsidiary (11)



## Africa

- Nigeria Nigeria & Central Africa Regional Office  
Abuja Office / Lagos Office  
Subsidiary (2)
- Algeria Algeria & Morocco Regional Office
- Libya Libya Tripoli Office / Subsidiary (1)
- Mozambique Mozambique Maputo Office

## Middle East

- UAE UAE Dubai Office
- Qatar Qatar Doha Office
- Saudi Saudi Al Khobar Office / Subsidiary (1)
- Kuwait Kuwait Kuwait Office
- Iraq Iraq Baghdad Office
- Oman Oman Muscat Office / Subsidiary (1)

## Asia, Pacific & Others

- Singapore Singapore Office / Subsidiary (1)
- Malaysia Malaysia Kuala Lumpur Office
- Philippines Philippines Manila Office / Subsidiary (1)
- Indonesia Indonesia Jakarta Office
- Vietnam Vietnam Hanoi Office / Subsidiaries (2)
- U.S.A U.S.A Subsidiaries (2)

# Ongoing Overseas Projects

● Infra. Works (13) 
 ● Oil&Gas (10) 
 ● Power (2) 
 ● Housing & Building (4) 
 ● Development (1)

## Africa

- Algeria**
- Boughzoul New Town
  - El Harrach River Maintenance
  - Djen-Djen Container Terminal
  - Ras Djinet Power Plant

- Nigeria**
- Gbaran Infill
  - Indorama Fertilizer Train 2
  - NLNG Train 7
  - Warri Refinery Quick Fix
  - Kaduna Refinery Quick Fix

- Mozambique**
- LNG Area 1

- Libya**
- Zwitina Power Plant

## Middle East

- Kuwait**
- Al Zour Refinery PKG 2-3

- Oman**
- Duqm Refinery PKG 1

- Iraq**
- Al Faw Grand Port Ph. 1  
Marine Infra. + Immersed Tunnel
  - Al Faw Port Entrance Roads
  - Al Faw Container Terminal PKG 1

## Oceania

- Papua New Guinea**
- LNG CPF FEED Ph. 1

## Asia

- Singapore**
- Cross Island Line CR108
  - Jurong Region Line J109
  - Woodlands Health Campus

- Vietnam**
- Star Lake Development
  - B3CC1 Complex
  - B1CC4 Office
  - THT Ph.2 Infra. Works
  - Phu Quoc Housing Development Ph.1

- Indonesia**
- Tangguh LNG Expansion Ph. 2

- Philippines**
- Jalaur River Multipurpose Dam

- Hong Kong**
- Fanling Bypass Road (Eastern Section)

- India**
- Bihar Extradosed Bridge
  - Mumbai Trans Harbor Link



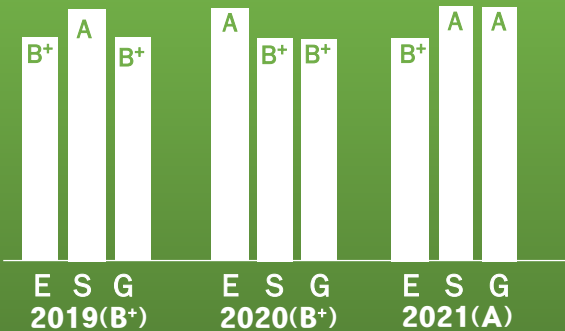
# Sustainability Management

ESG

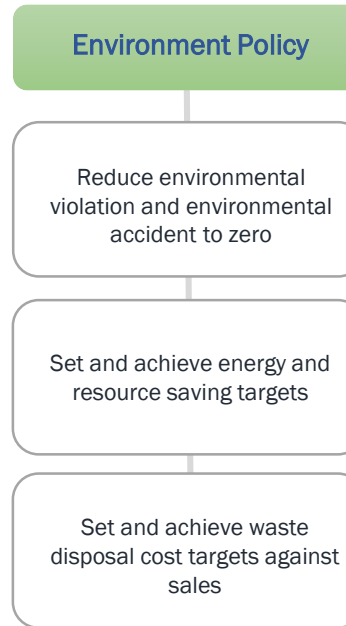
## ENVIRONMENT SOCIAL GOVERNANCE STRUCTURE

ESG refers to the three central factors in measuring the sustainability and societal impact for an investment in a company or business

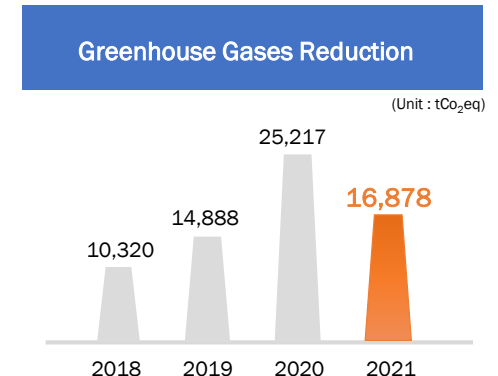
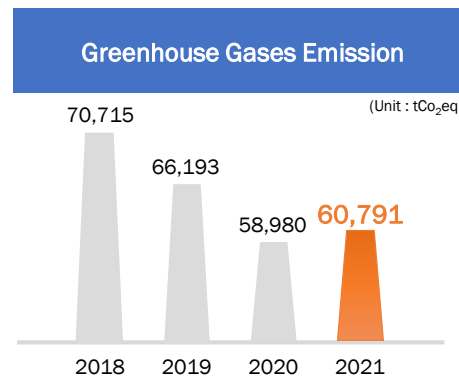
### KCGS\* Detailed Assessment Results



\* Korea Corporate Governance Service



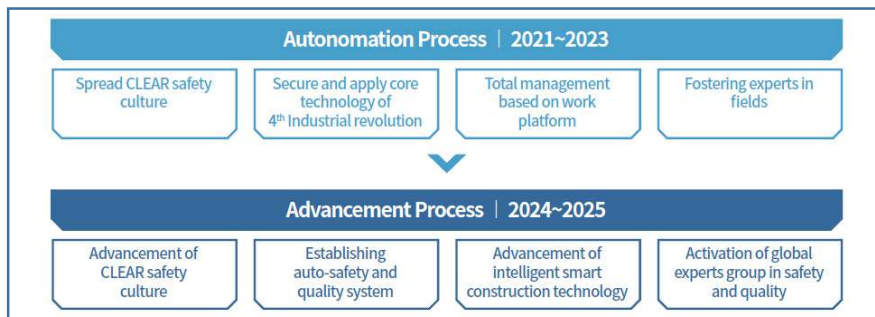
ISO 14001 Certification



2021 Greenhouse Gases allowed by Korean Government : 77,669 tCO<sub>2</sub>eq

# HSE-Q Management

## Safety and Health Strategy System



ISO 9001 certification  
Quality Management System



ISO 14001 certification  
Environmental Management System



ISO 45001 certification  
Occupational Safety & Health Management System



ISO 37001 certification  
Anti-Bribery Management System

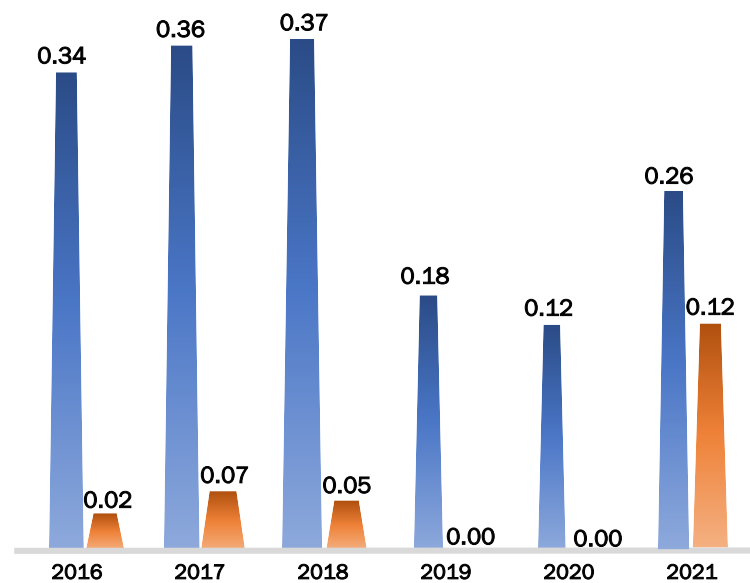


KOSHA-MS certification  
Occupational Safety & Health Management System

**Daewoo E&C** prioritizes worker's life and safety over profitability and has a safety and health system to respond to disasters and industrial accidents that may occur at construction sites. We strictly repair and maintain the construction machinery and strengthen the autonomous safety system where workers protect each other with internalized safety culture

## HSE Performance – HSE statistics

TRIR (Total Recordable Incident Rate)  
 LTIR (Lost Time Incident Rate)



(Per 1,000,000 Man-hours worked)

## Major Experiences

---

# PLANT BUSINESS

Oil & Gas  
Upstream  
Refinery  
LNG

Power  
Gas Fired  
Coal Fired  
Cogeneration  
Nuclear & Hydrogen

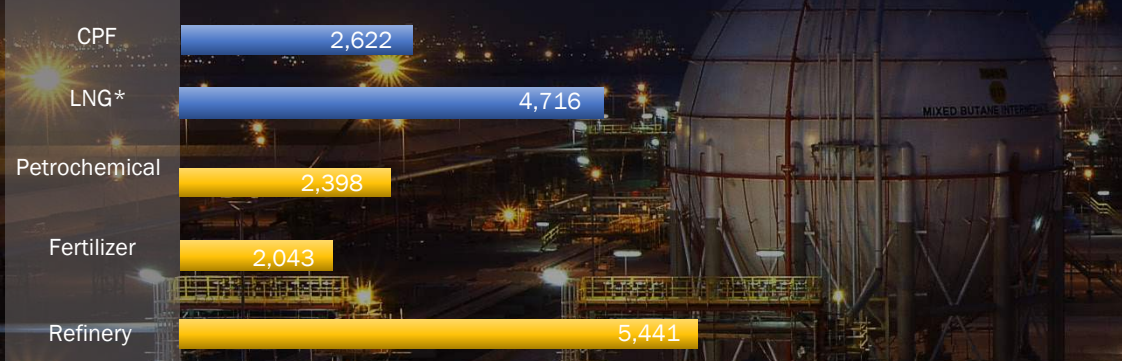


# Major Experiences Plant

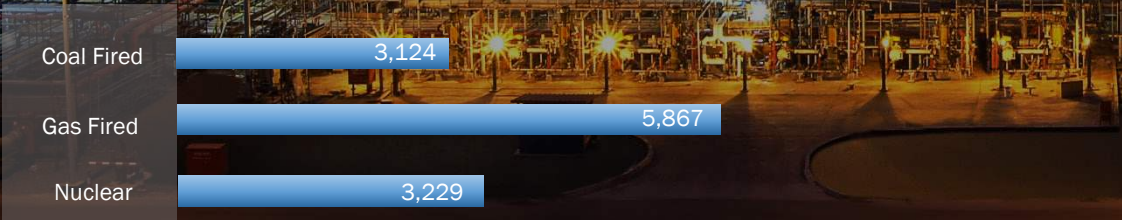
(Unit : U\$ Mil.)

## Cumulated project contract amounts since 2011

### Oil & Gas



### Power



## Performance

### New Order



### Sales



\* LNG Liquefaction, Regasification, Storage Tank

## Major Experiences

# Plant - Oil & Gas

### 1 LNG Train, Nigeria

Unit 1, 2, 3, 5, 6, 7

### 2 Ulsan S-OIL RUC, Korea

The largest as a single plant  
110,000 tons of steel structures  
used the first modular process in  
Korea

### 3 Al Zour Refinery, Kuwait

One of the largest refineries in  
the world producing 615,000  
barrels per day

### 4 Jazan Refinery, Saudi Arabia

EPC for Naptha & Aromatics  
complex (Gasoline blend of two  
gasoline grades, paraxlene and  
benzene)

### 5 Jorf Lasfar ODI Fertilizer Plant, Morocco

Phosphoric Acid 58,3 ton/h &  
Sulfuric Acid 4,200 mt/d





## Major Experiences

# Plant - Oil & Gas



**Upstream**

- Gbaran-Ubie CPF  
- 1,000 MMscfd (Nigeria)
- Gbaran Infill CPF  
- 600 MMscfd (Nigeria)
- Otumara Node CPF  
- 30 MMscfd (Nigeria)
- Cawthorne Gas Gathering  
- 200 MMscfd (Nigeria)
- Ogbainbiri Flowstation  
- 192 MMscfd (Nigeria)
- AKKAS CPF  
- 480 MMscfd (Iraq)
- Zubair DGS PKG  
- 50,000 BPD x 2 (Iraq)
- Hout Onshore Gas Facilities  
(Saudi Arabia)
- CAFC Oil CPF PJ  
- CPF 32,000 BPD
- Eastern Gas Pipeline  
- 40" x 56km (Nigeria)
- NLNG Ph3. Gas Line  
- 10~24" x 190km (Nigeria)



**LNG Liquefaction**

- Mozambique LNG Area 1/SMP  
- 6.4 MTPA x 2 (Mozambique)
- Nigeria LNG #7 / EPC  
- Total 8 MPTA Train & CLU (Nigeria)
- PNG LNG / General Const.  
- 3.1 MTPA x 2 (Papua New Guinea)
- Arzew LNG 3Z / SMP & E&I  
- 4 MTPA x 1 (Algeria)
- Sakhalin LNG II / SMP & E&I  
- 4.8 MPTA x 2 (Russia)
- Nigeria LNG #6 / General Const.  
- 4.8 MPTA x 1 (Nigeria)
- Nigeria LNG #5 / General Const.  
- 4.8 MPTA x 1 (Nigeria)
- Nigeria LNG #3 / Civil & Mech.  
- 2.88 MPTA x 1 (Nigeria)
- Nigeria LNG #1,2 / Mech. & Elec.  
- 2.88 MPTA x 2 (Nigeria)
- Yemen LNG Tank (EPC)  
- 140,000m<sup>3</sup> x 2 (Yemen)



**LNG Regasification**

- Incheon LNG (Korea)  
- #4, #5, #6  
: LNG Tank 100,000m<sup>3</sup> x 3  
- #13, #14, #15, #16  
: LNG Tank 200,000m<sup>3</sup> x 4  
- #17, #18  
: LNG Tank 200,000m<sup>3</sup> x 2
- Tongyeong LNG (Korea)  
- #201, #202, #203  
: LNG Tank 140,000m<sup>3</sup> x 3  
- #208, #209, #210  
: LNG Tank 140,000m<sup>3</sup> x 3  
- #213, #214  
: LNG Tank 200,000m<sup>3</sup> x 2
- Pyeongtaek LNG (Korea)  
: #22, #23 LNG Tank  
200,000m<sup>3</sup> x 3
- Samchuk LNG (Korea)  
- #5, #6, #7  
: LNG Tank 200,000m<sup>3</sup> x 3



**Downstream, Refinery, Fertilizer etc**

- Duqm Refinery (Oman)  
- 230,000 BPD, Process Unit
- Al Zour Refinery Package 2&3  
- Ancillary Process / Offsite  
& Utilities (Kuwait)
- Laffan Refinery  
- Condensate, Naphtha,  
Kerosene / Petroleum  
Product Tanks (Qatar)
- Jazan Refinery  
- Gasoline, Paraxylene,  
Benzene (Saudi Arabia)
- Clean Fuels Project  
- Upgrade & Expansion of  
Refinery (Kuwait)
- Rewais Refinery (UAE)  
- Tanks Farm Package
- Q-Chem II Ethylene (Qatar)
- Escravos Gas to Liquid (Nigeria)
- Indorama Fertilizer (Nigeria)
- Algeria Oman Fertilizer (Algeria)

## Major Experiences

# Plant - Power

### 1 Safi IPP, Morocco

693MW x 2 unit ultra-supercritical coal-fired power plant



### 2 Jorf Lasfar Power Plant Unit #5&6, Morocco

350MW x 2 supercritical coal-fired power plant



### 3 Sur IPP, Oman

2,000MW class combined cycle power plant



### 4 Sihwa Lake Tidal Power Plant, Korea

254MW (25.4MW x 10 unit)  
Tidal Gate : 3EA (B18.3 x H24 x L44.4)



### 5 Shin-wolseong Nuclear Power Plant, Korea

Pressurized water reactor 1,000 MW x 2 unit



## Major Experiences

# Plant - Power



**Gas Fired**

- Pocheon CCPP  
- 950MW (Korea)
- Ras Djinet CCPP  
- 1,200MW (Algeria)
- Pyeongtaek #2 CCPP  
- 920MW (Korea)
- Benghazi CCPP  
- 750MW (Libya)
- Sur IPP  
- 2,000MW (Oman)
- Misurata CCPP  
- 750MW (Libya)
- Shuweihat 3 IPP  
- 1,600MW (UAE)
- Afam VI CCPP  
- 650MW (Nigeria)
- Benghazi North CCPP  
- 300MW (Libya)
- Nam-Jeju CCPP  
- 160MW (Korea)
- Shin-pyeongtaek CCPP  
- 950MW (Korea)



**Coal Fired**

- Safi IPP  
- 1,386MW (Morocco)
- Samcheok TPP #1&2  
- 2,250MW (Korea)
- Dangjin Blast Furnace Gas Power Plants #1~8  
- 800MW (Korea)
- Jorf Lasfar TPP 5&6  
- 700MW (Morocco)
- Boryeong TPP #7&8  
- 1,000MW (Korea)
- Hadong TPP #1~6  
- 3,000MW (Korea)
- Zargan TPP #2  
- 145MW (Iran)
- Seohae TPP #1&2  
- 400MW (Korea)
- Ulsan TPP #4~6  
- 1,200MW (Korea)



**Cogeneration**

- Gwanggyo Energy Complex  
- 144MW (Korea)
- South-Western Daejeon Energy Complex  
- 48.3MW (Korea)
- Paju Combined Heat Power  
- 515MW (Korea)
- Hwaseong Combined Heat Power  
- 505MW (Korea)
- Incheon Nonhyun Combined Heat Power  
- 24MW (Korea)
- UPSC Cogeneration Power Plant Ph 3  
- 50MW (Korea)
- Ulsan Power Plant Extension  
- 200MW (Korea)
- UPSC Cogeneration Power Plant #2  
- 40MW (Korea)
- UPSC Cogeneration Power Plant #1  
- 40MW (Korea)
- Busan Dyeing Complex Cogeneration Power Plant  
- 260MW (Korea)
- Mokdong Cogeneration Power Plant  
- 40MW (Korea)



**Nuclear & Hydro**

- Jordan Research & Training Reactor  
- 5MW (Jordan)
- Shin-wolsong Nuclear Power Station #1&2  
- 2,000MW (Korea)
- Wolsong Nuclear Power Plant #3&4  
- 1,400MW (Korea)
- Patrind Hydro Electric Power Station  
- 150MW (Pakistan)
- Bohyun Hydropower Dam  
- 170kW (Korea)
- Hwabuk Hydropower Dam  
- 400kW (Korea)
- Sihwa Lake tidal Power Plant  
- 254MW (Korea)
- Dauliganga Hydropower Dam  
- 280MW (India)
- Houay Ho Hydropower Dam  
- 150MW (Laos)

## Major Experiences

---

### CIVIL

Transportation  
Habor & Shipyard  
Tunnel, Airport, Dam  
Environment

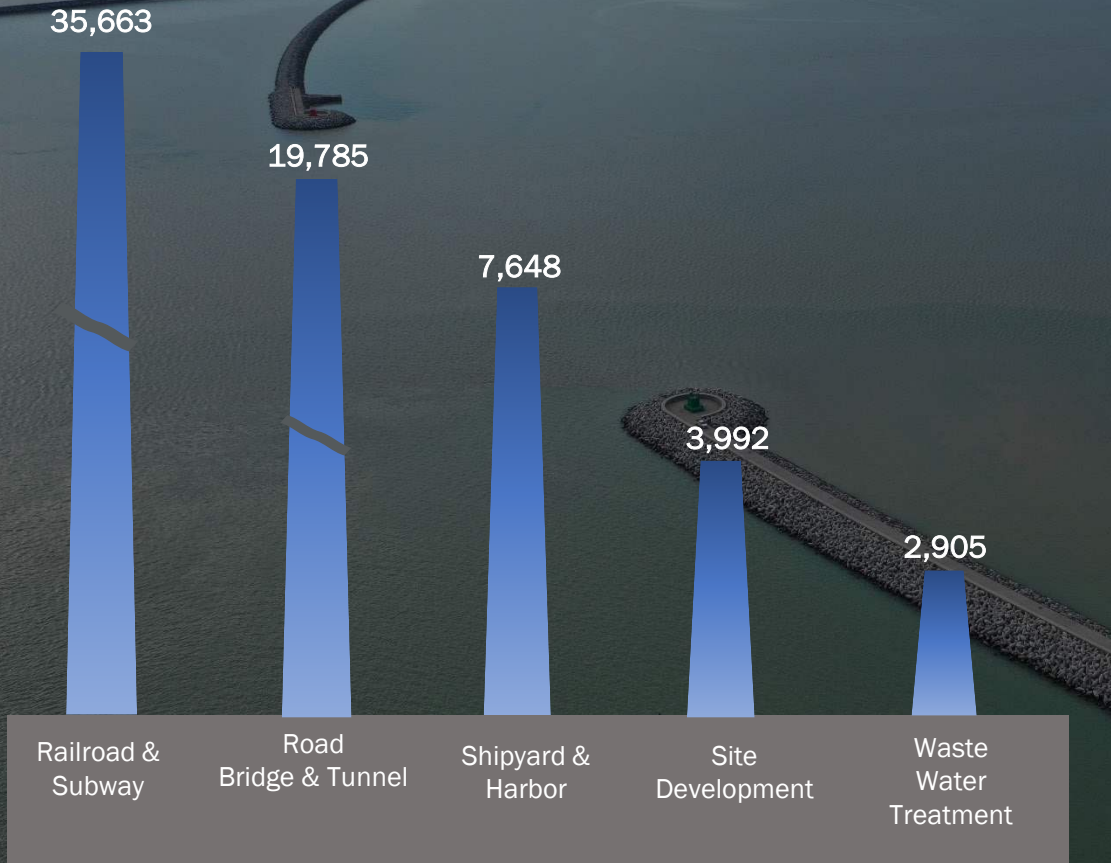


Major Experiences

**Civil**

(Unit : U\$ Mil.)

Cumulated project contract amounts since 2011



Performance

New Order

2021	<b>1,466</b>
2022	<b>1,375</b>

Sales

2021	<b>1,201</b>
2022	<b>1,548</b>

## Major Experiences

### Civil

**1 GK Fixed Link, Korea**

World's longest immersed tunnel (3.7km) included world's top 5 records

**2 Kazungula Bridge & Approach ramps, Botswana & Zambia**

Total length of 923m extradosed bridge and access road

**3 Donghongcheon-Yangyang Highway, Korea**

Inje Tunnel, the longest in Korea (10.96km) including 71.7km with four lanes

**4 Thomson Line MRT T216, Singapore**

Total length 3,200m (Shield tunnel 2,930m, station 180m)

**5 Al Faw Western Breakwater Project, Iraq**

World's largest breakwater (15.8km)



## Major Experiences

### Civil



#### Transportation

- Honam High Speed Railroad #1-1, 1-4  
- 182km (Korea)
- Seoul-Busan High Speed Railroad #4, 8, 10, 13, 14  
- 55.7km (Korea)
- Bandar Abbas-Bafq Railroad  
- 62.6km (Iran)
- Thomson MRT 216  
- 3.2km (Singapore)
- Bundang Subway Line Section. 3  
- 1.66km, 20 m Immersed tunnel (Korea)
- Meki-Zeway Highway  
- 37km (Ethiopia)
- New Orbital Highway  
- 42km (Qatar)
- Lahore-Islamabad Motorway  
- 350km (Pakistan)
- Tripoli Area Road  
- 140km (Libya)
- Bihar Extradosed Bridge  
- 22.76km (India)
- Kazungula Bridge  
- 1km (Botswana / Zambia)



#### Harbor & Shipyard

- Al Faw Container Terminal  
- 4.5km Break water  
- 1.7km Quay wall (Iraq)
- Al Faw Grand Port  
- 16km Western break water(Iraq)
- Djen Djen Container Terminal  
- 1.5km Quay (Algeria)
- Extension of Djen Djen port  
- 750m Break water (Algeria)
- Busan New Port South Container Terminal  
- 1.1km Quay (Korea)
- Sohar Breakwater  
- 7km Breakwater (Oman)
- North Breakwater in Busan Port  
- 1km Breakwater (Korea)
- Nakilat Dry Dock & Ship Repair Yard  
- Quay 2x400m, 200m Dock (Qatar)
- Duqm Dry Dock & Ship Repair Yard  
- Dock 2x410m (Oman)



#### Tunnel, Airport, Dam

- Chuncheon-Yangyang Highway 4 tunnels  
- 23,057m (Korea)
- Donghongcheon-Yangyang Highway  
- 10.96km tunnel (Korea)
- Busan-Geoje Fixed Road  
- 3,240m immersed tunnel (Korea)
- Khor Al Zubair Immersed Tunnel  
- 1,260m immersed tunnel (Iraq)
- KL Int'l Airport Runway #1 Taxiway  
- 4.5km (Malaysia)
- Houay Ho Hydropower Dam  
- 399m x 76.5m (Laos)
- Dhauliganga Hydroelectric Dam  
- 270m x 57m (India)
- Patrind Hydropower Dam  
- 180m x 43.5m (Pakistan)
- Jalaur Dam  
- 267m x 109m (Philippines)



#### Environment

- Nanji Sewage Treatment Plant  
- 1,000,000 m<sup>3</sup>/d (Korea)
- Gulpocheon Sewage Treatment Plant Phase I & II  
- 900,000 m<sup>3</sup>/d (Korea)
- Busan Suyeong Sewage Treatment Plant  
- 264,000 m<sup>3</sup>/d (Korea)
- Mokdong MSW\* Incineration & Cogeneration Power Plant  
- 150 t/d, 40mw (Korea)
- Bucheon MSW Incineration Plant  
- 300 t/d (Korea)
- Sihwa Tidal Power Plant  
- 254MW (Korea)
- Daegu Organic Waste to Energy Plant  
- 300 ton/d (Korea)
- Jeju Island Photovoltaics Power Plant  
- 79 units of photovoltaics,  
47.5MW (Korea)

\* MSW : Municipal Solid Waste  
2023 Company Overview 23

## Major Experiences

---



## HOUSING & BUILDING

Commercial  
Hospital  
Hotel, Public, Educational, Stadium  
Residential & Housing



Major Experiences

**Housing & Building**

(Unit : US\$ Mil.)

Cumulated project contract amounts since 2011



Performance

New Order



Sales



## Major Experiences

# Housing & Building

### 1 Star Lake City, Vietnam

Development of central area of Tay Ho Tay in Hanoi (Total Area : 207,66 ha)

### 2 Seoul Dragon City Hotelplex (Novotel Ambassador), Korea

39 storey & 4 basement, 3 buildings, 1,730 hotel rooms

### 3 Incheon International Airport Passenger Terminal I, Korea

4 storey & 2 basement (44 Mil. Passengers per year)

### 4 NEATT (North East Asia Trade Tower), Korea

68 storey & 4 basement, 305m height (2<sup>nd</sup> Highest in Korea) Business & Residential

### 5 Telekom Malaysia HQ Building, Malaysia

77 storey & 4 basement with auditorium, multi-purpose hall

### 6 Alexandra View Condominium, Singapore

43 storey building of 2 blocks

### 7 Keimyung University Dongsan Medical Center, Korea

20 storey & 5 basement, 1,033 bed hospital building



## Major Experiences

# Housing & Building



**Commercial**

- District 8 Development  
- 56 & 41 Storey Office, 2 Blk (48 Storey) (Indonesia)
- Public Bank Office Tower  
- 40 Storey & 6 Basement Office Tower (Malaysia)
- IB Tower  
- 58 Storey & 4 Basement Office Tower (Malaysia)
- Northeast Asian Trade Tower  
- 68 Storey Building & 3 Basement (Korea)
- Seoul Square - TFA: 132,865m<sup>2</sup>, 25 Storey (Korea)
- Telekom Malaysia HQ Building  
- 77 Storey & 4 Basement Office Tower (Malaysia)
- ASEM Tower & COEX Complex  
- 41 Storey & 4 Basement / 5 Storey & 5 Basement (Korea)



**Hospital**

- Woodlands Health Campus Contract 2 & 3  
- 1,800 Bed (Singapore)
- Keimyung University Donsan Medical Center  
- 1,033 Bed (Korea)
- Busan National University Yansan Hospital  
- 772 Bed (Korea)
- Gangnam Severance Hospital Main Building, etc.  
- 758 Bed (Korea)
- New Benghazi Central Hospital  
- 1,200 Bed (Libya)
- Tripoli Central Hospital  
- 1,438 Bed (Libya)
- Benghazi Central Hospital  
- 1,322 Bed (Libya)
- Yonsei Severance Cerebrovascular Center  
- 10 Storey & 2 Basement (Korea)



**Hotel, Public, Educational, Stadium**

- Yongsan Hotel  
- 3 Buildings of 39 Storey & 4 Basement (Korea)
- St. Regis Hotel  
- 48 Storey & 3 Basement (Malaysia)
- JW Marriott Tripoli Hotel  
- 370 Rooms, 36 Storey & 2 Basement (Libya)
- Algiers Hilton Hotel  
- 11 Storey & 1 Basement (Algeria)
- The Collage of Information Technology Building  
- TFA: 36,675m<sup>2</sup> (UAE)
- SNU Educational & Research Center  
- TFA: 16,336m<sup>2</sup> (Korea)
- Gwangmyeong Indoor Velodrome  
- 10,896 Seats (Korea)
- Busan Asiad Sport Complex  
- 62,300 Seat (Korea)



**Residential & Housing**

- Star Lake City  
- Development the Central Area of Hanoi (Vietnam)
- Pasir Ris Parcel 5 Condominium  
- 912 Units of 11-13 Storey (Singapore)
- Yeouido Daewoo Trump World I  
- 327 Units 2 Blk of 41 Storey & 5 Basement (Korea)
- Trump World  
- 69 Storey & 1 Basement (USA)
- Lake Town PRUGIO Cheonan  
- 995 Units TFA: 13,511m<sup>2</sup> (Korea)
- Worldmark WestEnd  
- 991 Housing 42 Storey & 3 Basement (Korea)
- Country Club Village 7 Build.  
- 832 Apt. Units (USA)
- Tripoli 4,608 Housing Unit  
- 4,608 Housing Unit (Libya)
- Housing & Development Board Housing  
- 8,000 Housing Units (Singapore)

# Thank you

170, Eulji-ro, Jung-gu, Seoul, Republic of Korea

If you have any enquiry, please contact us.

Phone : +82 2 2288 2928

Email : [mina.kim@daewooenc.com](mailto:mina.kim@daewooenc.com)

YOUR DREAM, OUR SPACE

